

# Protect your pet for life for just £70\*



That's right, for just seventy pounds you can protect your pet for life! With any vaccination course or annual booster, you can pay an additional £70 and get all normal annual vaccinations for your pet free for the rest of their life\*. So visit Weston-Super-Mare Vets4Pets to make an appointment and let your pet enjoy a safer tomorrow.

\*Subject to terms and conditions, see application form for details.

**Call 01934 631 777**

141 Milton Road, Weston Super Mare,  
North Somerset, BS22 8AA

Open 8.30am-7pm Mon-Fri, 9am-12 noon Sat

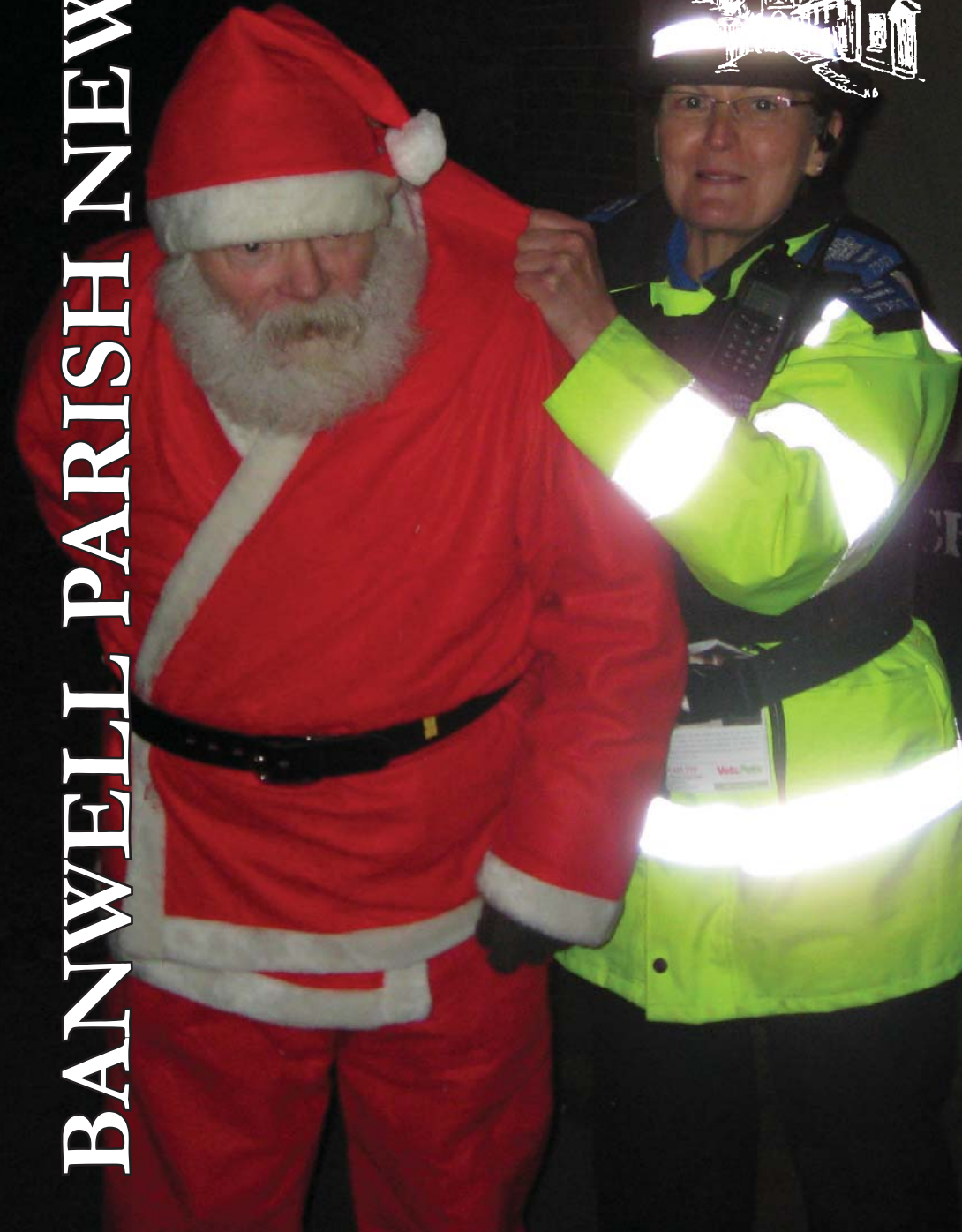
**Vets4Pets**

Putting your pet first.

[www.vets4pets.com](http://www.vets4pets.com)

**BANWELL PARISH NEWS**

**January 2008**



# Shop Locally

St Andrew's Church  
**A Soup Lunch**  
 at the  
**Village Hall**

on  
**Monday 14th January**

and

**Monday 14th April**

from 12.30 – 1.30pm

**£1.00**

**All welcome**



**Box Bush**  
 Real Food Store

**Local Organic  
 Fruit & Vegetable Boxes**

from £7.50 delivered

to order  
 telephone 01934 822356  
 or on-line  
[www.boxbushfarm.co.uk](http://www.boxbushfarm.co.uk)  
 Box Bush Farm, North Somerset BS24 6UA

## Local Traders

### ALG ELECTRICS

All work is certified to current legislation and comes with a three year warranty.  
 NAPIT - Full scope member. PART P registered  
 TRUSTMARK registered member  
 (Mobile 07932 186590) 822759

### WHITE LODGE CRAFTS

Hand Crafted Cards & Knitted items  
 Marmalades, Jams, Chutneys  
 (Commissions taken)  
 Contact Rosalind Denton 822430

### A. J. AUTOS

Unit 1, Wolverhill Industrial Units 824434  
 Banwell  
 Vehicle repairs & maintenance,  
 insurance work & M.O.T's Arranged

### MINI-DIGGER HIRE (1.5TONNES)

Self drive of operator  
 Daily, Weekly or Weekend rates  
 Free delivery Banwell area  
 Further information or advice  
 D Ruby mobile 07749 285471 823142

### WOODCHARM FITTED BEDROOMS

Made to measure and expertly fitted.  
 Wardrobes, chests of drawers and cupboards.  
 Quality at competitive prices.  
 Showroom 17 Lynx Crescent off  
 Winterstoke Road. 414598

### SMART SIGNS

Vehicle Graphics - Banners - Shop Fronts - Magnetics - and more... Signs made to any specification.  
 Unit 12, Knightcott Ind Est, Banwell. 824300  
 Mobile 07074 824300 or  
 Visit our website [www.smart-signs.co.uk](http://www.smart-signs.co.uk)

### THE BREWERS ARMS, CHURCH STREET

Traditional country pub serving 822635  
 Real ales, Hot & Cold Snacks.  
 Buffet parties catered for.  
 Always a warm welcome!

### JPS TILING

Tiling Specialist from Spain  
 15 years experience - no job too small  
 Used by Yoji in St James Street, Weston  
 mobile 0784 5077004 820806

### WESTCOAST INTERIORS KITCHENS AND BEDROOMS

Showroom: Unit 2, Wolverhill Industrial Units  
 off Wolverhill Road, Banwell 820025  
 Sliding mirror wardrobes made to measure.

### DELICIOUS

West Street, Banwell  
 Fish and Chips & Chinese Take Away meals  
 Extensive menu  
 For people who enjoy good food 823050

### BANWELL POST OFFICE

24 West Street, Banwell. BS29 6DB 822244  
 Support your local 'Community Award Winning'  
 Post Office, the only village banking facility.  
 The 'One Stop Post Shop' for all your greetings  
 cards, postal and stationery requirements.

### FREE WELLNESS EVALUATION

Optimise your nutrition for weight control,  
 increased energy and better health.  
 For more information or to book your complimentary  
 Wellness Evaluation, call Guy  
[www.herbal-health.org.uk](http://www.herbal-health.org.uk) 824417

### PLASTERING AND BUILDING MAINTENANCE

Steven Sherwood BA(Hons)  
 Telephone: 820695/07958 021303  
 for quotes and advice on all building restoration.

### PAINTER & DECORATOR

High quality guaranteed  
 30 years experience  
 fully insured - free estimates  
 Mike Worrall. 07747 102287 823696

### WILL WRITING SERVICE

Wills professionally prepared in the privacy of  
 your home.  
 Fixed fees include advice and Instruction  
 taking: £69 single £89 husband and wife.  
 Tel.: David READ Services on 513489

### STEPHEN BENNETT & SON, BICSc

The Knoll, Wint hill, Banwell, BS29 6NG. Commercial contract cleaners. Specialist carpet and upholstery cleaners.  
 Certified pest controllers.  
 (Mobile 07889 981019) Tel & Fax 822347

### BROWN ENVY

Mobile Spray Tanning  
 A perfect flawless tan in the privacy of your own  
 home. Discounts available for party bookings.  
 For appointments and enquiries ring Sandra on  
 Mobile 07899667126 or 822314

### BANWELL VILLAGE PHARMACY 820944

Next Banwell Surgery, Westfield Rd. Fax 823869  
 Mon, Tues, Wed, Fri 9-1pm & 2-6pm, Thurs 9-2pm,  
 Sat 9-12. Comprehensive medicines and NHS prescription  
 service. Open to all including patients at other surgeries.

### A. E. & S. M. VICKERY

26 West Street 822412  
 Family Butchers  
 We can supply your weekly meat or fill your freezer.

### BANWELL ACTIVITY TOYS CENTRE

Shirley Davies, Eastermead Farm 823926  
 Top quality range of TP garden swings, slides,  
 climbing frames, toboggans, trampolines,  
 tractors and trailers, farms and forts, wooden  
 dolls houses and furniture. Lots in stock

### WORLE GLASS WINDOWS & JOINERY

Unit 7, Worle Industrial Estate, 515470  
 Queensway, Worle.  
 For all your new work and replacements.

### MOBILE HAIR CARE AND DESIGN

by Khanitha Masters B.A.(drama)  
 Fully qualified to create and care for YOUR  
 beautiful hair style to suit your individual features.  
 Competitive rates. Wedding and special  
 event styling with a "different look". 822367

### NE PLUMBING AND HEATING

For your local Corgi registered plumber  
 and heating engineer:-  
 Ring Nick on 07707 069 726 or 822932

### FURNITURE REPAIR AND RESTORATION.

Furniture Repairs;  
 Antique Restoration; Cabinet Making.  
 Free estimates. 820426

### BANWELL CASTLE

B&B. Cream Teas 822263  
 Pre booked restaurant 824826  
 Parties, Pig Roasts, Bar-B-Que's  
 Civil Weddings on site

### NORTH SOMERSET COUNCILLORS

Tony Lake 852400  
 Ann Harley 842069  
 Tim Mater 822372

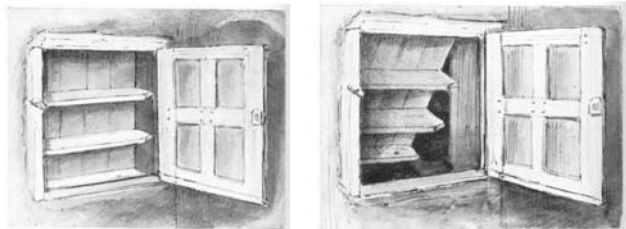
### KNIGHTCOTT MOTORS

Knightcott 822335  
 For new and quality used cars  
 and light commercials.

# BANWELL SOCIETY OF ARCHAEOLOGY

## LOCAL HISTORY TALKS

### Secret Hiding Places: Priest holes & Secret Passages



By Anne Bowring

Friday 8 February Banwell Village Hall 7.30

REFRESHMENTS

RAFFLE

## VISITORS WELCOME

CONTACTS	Tel.
Church of England. The PCC Secretary, The Coach House, East Street, Banwell	822320
Methodist. Revd. Sam, Wesley Manse, Dinghurst Rd, Churchill	852314
Roman Catholic. Revd. Fr. Tibor Szende, The Presbytery, Tweentown, Cheddar	742564

## Prayer

The Church families of St. Andrew's and Banwell Methodist Church will be praying for the people in your area on the following Sundays.



### January

6th Dark Lane  
13th East Street  
20th Greenfields Avenue  
27th Gables Close

### February

3rd High Street  
10th Hilmer Rise

If you have any special prayers or concerns, whether for yourself, one of your family or for a neighbour (e.g. someone who is sick: getting married: seeking employment: going away to work or college: or in any kind of trouble or difficulty), please ring one of the following numbers either to have a chat, or leave a message, or make an appointment for one of us to visit you, or vice versa.

St Andrew's: Dinah Harrison 822344

Methodist: The Revd. Sam 852314

## Computer Trouble

One of Microsoft's finest technicians was drafted and sent to boot camp. At the rifle range, he was given some instruction, a rifle, and bullets. He fired several shots at the target. The report came from the target area that all attempts had completely missed the target.

The technician looked at his rifle, and then at the target. He looked at the rifle again, and then at the target again. He put his finger over the end of the rifle barrel and squeezed the trigger with his other hand. The end of his finger was blown off, whereupon he yelled toward the target area, "It's leaving here just fine, the trouble must be at your end!"

Last night I dreamed I ate a ten-pound marshmallow, and when I woke up the pillow was gone.

Tommy Cooper

Banwell Playgroup for rising 3s-5yr. olds meets Monday to Friday during term-time 9.00am - 11.30am. For more information please contact the Playgroup on 823404 or Wendy Lloyd 820605.

Baby/Toddler Group meets every Friday morning 9.30am -11.45am. at the Scout Hut.  
Contact Gareth Thomas 823177

Banwell Scout Group: Beavers, Cubs and Scouts. Peter Bradbury, Group Scout Leader 01934 822719

Banwell Fish Scheme: Chairman Mrs Dinah Harrison 822344. Lift Co-ordinator Mrs G Boddy 823621.

Village Hall Booking Secretary: Mr David Westlake 30 Knightcott Road, Banwell. Tel: 822433.

Youth & Community Centre Booking Secretary: Nicola Hooper (Parish Clerk) 812567,  
email clerk@banwell.org

Methodist School Room Hire Bookings Tel: 822873 or 822066

Banwell-Potigny Twinning Assoc. Contact Jeanne Evans 823878

Banwell Bridge Club Contact: Roger Boland Tel: 820615 or Meg Tillotson Tel: 823252

## Services In Our Churches

### ST. ANDREW'S

	8.00 am	Holy Communion
	10.00 am	Family Eucharist
	3.30 pm	Evensong
1st Sunday	3.30 pm	BCP Eucharist
	7.15 pm	Young at Heart

### METHODIST

	10.30 am	Morning Service & Sunday School
	6.30 pm	Evening Service

**ROMAN CATHOLIC** Cheddar  
Sunday 9.00 am Mass

**ALL WELCOME**

## The Kathleen Jones Family Charity

The awards for 2008 are as follows.

Carols under the Tower	£170
Banwell in Bloom	£100
The Parish News	£100
A St Andrews flag for the church tower	TBA
Enhancement of the War Memorial subject to agreement by all parties	£600

From 1998 until 2007 the charity has been pleased to grant £11,872.87 in support of village projects and local organisations.

## Half Price Tickets

USAir recently introduced a special half fare for wives who accompanied their husbands on business trips. Expecting valuable testimonials, the PR department sent out letters to all the wives of businessmen who had used the special rates, asking how they enjoyed their trip.

Letters are still pouring in asking, "What trip?"

**Please note our  
email address &  
website**

theeditor@banwellparishnews.org.uk  
www.banwellparishnews.org.uk

## Banwell W.I.

November was our A.G.M., and everyone agreed that we have had a very successful year, with some very good and interesting speakers.

Our retiring President, Jean Sims, was thanked for all her hard work during the past three years.

Our new president is Margaret Harris, and we all wish her well during the next three years.

Our December meeting and Christmas Dinner at The Lamb, Axbridge was enjoyed by all.

We would like to wish everyone a very Happy New Year.

## COFFEE MORNING AND BOOK SALE

St. Andrew's Church,  
Banwell.

**Saturday  
26th January 2008**

10.00 AM - 12.00 NOON

Coffee and biscuits 50p.

## Artificial Intelligence

Hello. You are talking to a machine. I am capable of receiving messages. My owners do not need new windows, or a hot tub, and their carpets are clean. They give to charity through the office and don't need their picture taken. If you're still with me, leave your name and number and they will get back to you.

## C V GOWER & SON

INDEPENDENT FAMILY FUNERAL DIRECTORS



- ✦ All localities covered
- ✦ 24hr. Service every day
- ✦ Distance and Overseas Funerals
- ✦ Pre-paid Funeral Plans
- ✦ Private Chapel of Rest
- ✦ Green Funerals arranged

**Winscombe (01934) 842945**

The Square,  
Winscombe,  
Somerset BS25 1BS

## From the Registers

**December 2007**

### Baptism

30th Emilia May Frisby

### Wedding

22nd Rebecca Anne to  
Robert John Suik

### Funeral

13th Peggy Iris Flowers

# Carols Under The Tower

This now traditional village event was once again well supported with many people enjoying singing well known carols and savouring delicious mince-pies washed down with hot punch. It also featured the apprehension of a certain red-coated gentleman by our PCSO Maggie Evans!



## WANTED

Scrap Gold and Silver  
 Odd earrings, chains, bracelets and wedding rings.  
 Silver cigarette cases etc.  
 Old glass cake stands.  
 No obligation  
 Fair prices paid by lady caller.  
 Tel : Mary Goodrum  
 01934-822-173.

# From Your PCSO



As some of you will appreciate, I have been your PCSO for many months now and have been very welcomed by those with whom I have met along the way. I think it is safe to say that people and places are now becoming familiar and relationships with the parish council, school and other organisations are being established. None the less, there are still clubs and people that I would still like to meet. If you think I could be of assistance in attending any of your meetings or organisations for talks and the like, please do contact me on the Villages Team telephone number. Banwell seems to be a busy village – that was evident over the summer and this Christmas. I was very pleased to meet Santa and to be at the Christingle Service which served as great opportunities to meet yet more new faces and valuable contacts. I hope that 2008 will be as busy and that the residents of Banwell can continue to enjoy a relatively crime free environment and a safe place to live in. Happy New Year!

## ROAD SAFETY

With dark mornings and evenings still with us I just want to take the opportunity of reminding parents and drivers to spare a thought when walking or driving in Banwell. Dark roads combined with bad weather and being late, all add up to accidents waiting to happen.

- Be seen –if on foot wear fluorescent and reflective clothing and footwear, tabards, arm bands.

- When crossing the road - do so with care and with the aid of the Lollipop Lady where appropriate. Remember to talk to your children about road safety and lead by example!

- Drivers feeling harassed in the morning? – then make sure you reduce your stress by leaving a bit earlier to avoid unnecessary incidents. As you know, Banwell can be a bottleneck early morning and evening particularly, so please be mindful of your environment, other drivers and pedestrians around you.

- East Street - residents have been very considerate in complying with the temporary parking measures along the north side of the road. We thank you for this and for your continued support.

- The Square – I should like to remind people that parking on the pavement is an offence, as is parking too near the junction which in turn obstructs other road users. Please do not park on this stretch of the road.

- Vehicles mounting the pavement in ‘The Narrows’ – a number of complaints have been received regarding pedestrians being narrowly missed by vehicles who have mounted the pavement. It is very likely that most of the offending drivers are passing through. However, would you ensure that you are not one of the guilty ones and exercise a little patience!

## Advanced Notice Of Beat Surgeries

Friday, 18 January and Friday, 15 February, 2008, 9 – 10 am in Banwell Village Hall.

## Need to speak to us?

PCSO 7369 Maggie Evans & PC 2307 Adrian Woolcott can be contacted on the Villages Team tel no: 01934 638123

Copy for the next issue by the 25th January

EDITOR: Dave Colbourne, The Gate House, East Street, Banwell. Tel.822902  
 ADVERTISEMENT MANAGER: Mike Hebden, 1 Chestnut Close. Banwell. Tel.823517  
 theeditor@banwellparishnews.org.uk

# Mendip Society



## Talks

Visitors are very welcome, £3.00 (members £1.50)

For details of the talks please telephone the number given for the venue.

### CHEDDAR TALKS

Talks start at 7:30pm and are held at: St Andrew's Church House, Parsons Pen. Contact: Judith 01934 744082.

THU 14th February:

"Is sustainable development possible?"

Roger Martin, President of the Mendip Society, former diplomat ("resigned in fury..."), former Director of Somerset Wildlife Trust, and on many local, regional and national environmental bodies, explores the vital, but much abused term "Sustainability". Is sustainable development possible? If so what would it be like?

### WINSCOMBE TALKS

Talks start at 7:30pm and are held at: St James's Church Hall, Woodborough Road. Contact: Elinor 01934 877211.

THU 21st February:  
"The Wildlife of Quarries"

David Boag, Wildlife author/photographer.

Naturalist, photographer and the author/photographer of 15 books, David has worked as a presenter for both radio and television. He has a reputation for being a lively and entertaining speaker. We can expect his talk to be beautifully illustrated and to fit in well with the January visit to Whatley Quarry.

# St Pixels

**BBC Radio 2 discovers one third of web worshippers prefer doing church online.**

For a third of its 2000 members, online church St Pixels is the main or only contact with traditional Christianity.

Those are the findings of a survey carried out by the experimental church to be featured recently on the BBC Radio 2 documentary Faith on the Web, presented by Simon Mayo.

Jame, 19, a student who lives in Florida, USA says: "I've no idea what I'd do without the friends I've made in St Pixels - though I've never met them. No matter who you are, or where you're from, you will ALWAYS find someone here to talk to. It's like a family home, where the door is always open for friends and their friends. I was baptised a Methodist but that's as far as it goes. I don't currently attend a physical church."

Mark Howe, one of St Pixels' programmers, said: "People join for a variety of reasons. We are accessible for those who cannot leave home due to infirmity or young children. It's also convenient for people whose working life does not fit with local church services - or who live far from a physical church.

"Members take part in discussions, pray for each other and play games - as well as worshipping together. Many travel considerable distances to meet 'in real life'."

St Pixels, supported by the Methodist Church, has more than 2000 registered members. Some 1500 different people visit the 'church' each day. It is at: [www.stpixels.com](http://www.stpixels.com).

# Parish Council

**HAPPY NEW YEAR to everyone from your Parish Councillors.**

## Parish Plan open meeting.

On Wednesday 5th December some 42 parishioners turned up at the Scout's Hut and 26 of them filled in a short questionnaire on willingness to volunteer in certain activities in order for a Parish Plan to succeed. I found it heartening that the completed questionnaires represented a 62% response. See below for response:-

### Answers to survey questions

I found the meeting useful.	Yes	21	No	0
-----------------------------	-----	----	----	---

### Do you:

Live in the Parish	Yes	26	No	0
Work in the Parish	Yes	2	No	16
Use facilities in the Parish	Yes	22	No	0
Attend a group/organisation in the area	Yes	12	No	8
I approve of the idea of our community undertaking a Parish Plan	Yes	24	No	0

### I would like to help practically with:

Questionnaires	7
Interviews	6
Research	3
Open Events	4
Joining the Steering Group	7
Joining a working party on a particular topic	11

### Other

Please keep me informed of the progress of this research	7
--	---

The follow-up inviting all those who were interested in forming a Steering Group attended a meeting on 12th Dec. some 9 parishioners in total. It was agreed that Richard Griffin would act as Chairman, Angela Hayden as Secretary, Bev Bray as Treasurer and Martin Bray as Publicity. So for starters see below.

David Elsey  
Chair - PC.

## £3,000 For Banwell

Banwell now has a “steering group” the members are all volunteers living in Banwell with the future of our village at heart.

There is a probability of Banwell receiving up to £3,000 for future developments.

The Banwell Parish Plan steering group would like to hear how you as a member of the parish would like to spend the money. Should it be spent on youth projects? The aged? Traffic calming measures? Whatever?

For suggestions or further information:- tel: 01934 823660

---

## Banwell Youth Club

There are quite a few changes happening at Banwell Youth Club. We have said goodbye to our former base at the Youth & Community Centre for the time being. Club members are all looking forward to our new purpose adapted home when the



YCC is revamped into the new ‘Children’s Centre’ over the coming months. Until then

it is business as usual.

We are running the club from a mobile unit (converted bus) provided by Avon Youth Association. It is equipped with online computers, TV, music and refreshments. It is very much a venue to meet your friends and have some fun.



We are proud that two club members, Jessie & Louise have each been given an ‘Achievement Award’ by North Somerset Council for their efforts in club activities.

Another highlight is the appointment of Amy Hone who has become our new Youth Leader.

Richard Tolmie

Chair - Banwell Youth Club Management Committee

---

## New Youth Worker

Hello my name is Amy Hone I am the new youth worker at Banwell Youth Club. Since we have been working off the bus we have had a range of activities for the young people to take part in, including a DJ Workshop, creating Christmas decorations, internet access, a play-station, exploring friendships and lots more.

On the 10th Dec. Peter Turner who is the Assistant Director of CYPS came down to visit the mobile youth bus. He was really impressed with all the young people, the activities and the youth work staff.

I am really looking forward to working with the young people from Banwell and with my Youth Work Team - Bev, Candice, David and Vicky, we aim to deliver a range of challenging and inspiring activities and opportunities whilst offering a safe and friendly place for young people to meet up with their friends and have a chance to take part in a program, which will develop and broaden their horizons.

Banwell Youth Club currently opens on a Monday evening from 7.15 - 9.15pm for Year 7 & Year 8. On Tuesday evening 7.15 - 9.15pm for Year 9,10 & 11.

Everyone is welcome, please feel free to come along.

Amy Hone – Banwell Youth Club tel: 01934 852531

The Parish Council are more than happy to continue supporting the activities of the Banwell Youth Club.

---

## Children’s Centre

Children’s Centres aim to improve outcomes for young children (under 5 years) with a particular focus on meeting specific needs of any child who for whatever reason may be vulnerable or disadvantaged. The Children’s Centre for Banwell & Winscombe will be sited in the refurbished Youth and Community Centre in Banwell. The Children’s Centre does not seek to replace existing services and activities, but to support and work in partnership with statutory and voluntary organisations such as health, education, the

youth service and voluntary services

The Children’s Centre will provide:

- A one stop shop for families providing sign posting to services and support to parents in bringing up their children;
- Links to adult learning, training and employment;
- Although aimed at 0-5 year children and their families the Centres aim to provide a continuum of care and support for 0-19 years through the extended schools initiative and partnership working with the youth service.

If you would like further information about your local Children’s Centre please contact Sue James (Children’s Centre Development Manager), telephone: 01934 426607 or 07825341287 or email Sue.James@n-somerset.gov.uk

BANWELL-POTIGNY TWINNING ASSOCIATION



**Sunday Lunch and AGM**

**24th February 2008**

**12.30 for 1 Scout HQ**

A runaway success in previous years, our special two-course Sunday lunch gives an extra something to brighten up the dull days of winter!

We are always looking for new members, so if you would like to find out more about the Twinning, then this is an ideal opportunity to come along and meet us.

Admission by ticket only - available from Jeanne on [jeanne\\_evans70@hotmail.com](mailto:jeanne_evans70@hotmail.com) or 823878 or from Banwell News

**BYO wine/soft drinks      Raffle**

**£7.50 per head                      £5 under 16**

**See you there!**

# Mothers' Union Report

In December, members and friends from three Branches in the Deanery joined St Andrew's Mothers' Union at Mooseheart International to celebrate the coming of our Saviour. Sixty-two of us sat down to an excellent lunch, after which Mrs Barbara Stratton, our Diocesan President spoke to us about the History of Christmas.

One of the stories she related was about why there should be a piece of silver included in everyone's Christmas Decorations. The legend goes that whilst Mary, Joseph and the baby Jesus were fleeing from King Herod they took refuge in a cave. A tiny spider living in the cave sensing how important they were decided to spin a beautiful web across the entrance of the cave as a gift for them. In the morning, soldiers searching for the family saw the web across the entrance covered in hoarfrost and deciding that no one could be inside, passed on by. Thus, the holy family were kept safe from King Herod. The piece of silver in our decorations therefore reminds us of the frosty web. The story of course has no basis in fact, and probably never happened, but it is a lovely tale nevertheless.

At Christmas we remember that Jesus was born to bring forgiveness, peace and love to all. "Love came down at Christmas". That message is as true today as it was over 2000 years ago. This love is never-ending and can never die, and if we can hold this in our hearts, not only at Christmas, but all year round then God's Kingdom would be found not only in heaven, but also here on Earth.

Our speaker in January is Mrs Liz Green,

our Deanery President, who will be telling us about the General Meeting of the Mothers' Union held in Liverpool in June 2007, then on 13th February we will be welcoming Mr Eric Small as our speaker. All Welcome

The members of St Andrew's Mothers' Union would like to wish everyone all the best for the coming year.

Gloria Boddy

## Well Read

A pair of chickens walk up to the circulation desk at a public library and say, 'Buk Buk BUK.' The librarian decides that the chickens desire three books, and gives it to them... and the chickens leave shortly thereafter.

Around midday, the two chickens return to the circulation desk quite vexed and say, 'Buk Buk BuKKOOK!' The librarian decides that the chickens desire another three books and gives it to them. The chickens leave as before.

The two chickens return to the library in the early afternoon, approach the librarian, looking very annoyed and say, 'Buk Buk Buk Buk Bukkooook!' The librarian is now a little suspicious of these chickens. She gives them what they request, and decides to follow them.

She followed them out of the library, out of the town, and to a park. At this point, she hid behind a tree, not wanting to be seen. She saw the two chickens throwing the books at a frog in a pond, to which the frog was saying, "Rrredit Rrredit Rrredit..."

The meeting of two personalities is like the contact of two chemical substances: if there is any reaction, both are transformed.

Carl Jung



## What change would you like the New Year to bring?

In Year 5 we have been discussing New Year Resolutions and how people often promise to change something in their life for the better. We also talked about what changes we would like to see that would improve the world. Here are some of our ideas.

All people around the world help each other.

World peace.

No polluting factories.

An end to the violence in Iraq.

End global warming.

Stop cutting down trees.

End all violence in the world.

More wind farms.

Help people to be healthy.

People respect themselves, each other and the world.

Grow more trees.

More schools in Africa.

Use less electricity.

People to donate to charity.

Walk more.

Reduce pollution.

## What changes would you like to see in the world this New Year?



# Caring At Christmas

**A big thank you for your wonderful response.**

Thank you, everybody, for your kind & generous support for our 2007 appeal for Caring at Christmas. We were able to deliver a large vanload of clothes, bedding and food to the night shelter for the homeless in good time for Christmas, plus monetary donations totalling over £320! This is a record amount. Many, many thanks for your generosity.

Eric Small & Dinah Harrison.

## Possible IBM acronyms

- IBM: It's Being Mended
- IBM: Idiots Built Me
- IBM: Intense Bowel Movement
- IBM: Inferior But Marketable?
- IBM: I've Been Mislead
- IBM: It's Better Manually
- IBM: I Blame Microsoft.
- IBM: I've Been Mugged

ST. ANDREW'S CHURCH

BANWELL

## "STORYTIME"

For young children

Coffee and chat for Mums and Dads

MONDAY 28th January

10.00 am

Please join us

All welcome

# Banwell School Hot tickets!

Banwell Primary School had its best-ever Christmas Fayre in 2007 raising a fantastic £1,430, including £100 for the playgroup raised by Banwell Buddies. Despite the pouring rain, hundreds came along to the event and the Friends of Banwell Primary School would like to thank everyone in the community for their support.

Fundraising by the Friends continues in the New Year with a Quiz & Curry Night on Friday 1 February. The evening kicks off at 7.30pm in the old school hall, so why not come along and test your knowledge, have some fun, and enjoy a delicious curry. Make up a team of up to eight or just come along and join a team.

Tickets are £5 per person if you book before 18 January – £6 after that – and the price includes food. There will also be a bar serving wine, beer and soft drinks plus a great raffle and other attractions. Numbers are limited so don't delay. Tickets available from the school and cheques should be made payable to Friends of Banwell Primary School. For more information contact Jon or Sam Dewey 824500.

## Doged

A man went to visit a friend and was amazed to find him playing chess with his dog. He watched the game in astonishment for a while. "I can hardly believe my eyes!" he exclaimed. "That's the smartest dog I've ever seen."

"Nah, he's not so smart," the friend replied. "I've beaten him three games out of five."

# Christmas Past

A Wartime Christmas Stocking

By Margaret Flux

This was a festive evening, complete with mince pies and a light hearted talk about a childhood Christmas during the Second World War. Margaret entertained us with a brief history of Christmas and it's associated legends, followed by reminiscences of her childhood – humorously illustrated by her 'Wartime Stocking'.

She began by briefly covering the history of Christmas – from the adoption of the pagan Winter Solstice as the celebration of new life, and the Roman festival of Saturnalia in Roman times becoming the Christmas festival. In 1582 Pope Gregory XIII made various changes to the calendar to bring the dates and seasons into line, and fixing the date for Christmas as the 25th December.

Over the years various other pagan customs became a part of the Christmas celebrations – the Yule log, spiced meat for mince pies, Druid mistletoe, holly and ivy. Then in Victorian times Prince Albert introduced the Christmas tree and candles. Crackers were invented in 1847, by a confectioner named Tom Smith, who devised a way to sell his sweets in a twist of paper!

The Victorian Christmas became a great excuse for gluttony and overindulgence – at least for the rich. Geese were driven to market, their feet tarred and sanded, and turkeys wore little leather boots to protect them during the 'drive.' Charles Dickens 'A Christmas Carol' became a bestseller and helped to highlight the plight of the poor.

Margaret reminded us of the truce during the First WW, when British and German troops sang carols and played football together in

no-man's-land.

This brought us to the fun part of the evening - Margaret opened her wartime Christmas stocking. .... It was filled with simple home-made toys, like the kaleidoscope made of bamboo and salvaged glass fragments, and old fashioned wooden toys, such as a jack-in-the-box and 'pecking hens'. Harbutt's plasticine, now made famous by Nick Park and Wallace and Grommet, was also a staple - as was an orange, nuts and a piece of coal – all wrapped in newspaper. After the King's speech came the tea of Spam, corned beef, jelly and ice cream, all followed by party games.

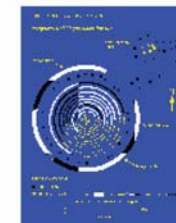
Everyone joined in the reminiscences – with memories of Meccano, Hornby train sets, dolls in knitted layettes – and not a battery in sight! A time of fewer, simpler pleasures, remembered by many of the older members of the society.

Next meeting: 11th January 2008 – Gordon Strong on The Stones at Stanton Drew

All welcome

**BANWELL SOCIETY OF ARCHAEOLOGY**

**LOCAL HISTORY TALK**



**Stanton Drew Stone Circle**

By Gordon Strong

11 January Banwell Village Hall 7.30

REFRESHMENTS RAFFLE

**VISITORS WELCOME**

# No Carnival For Seniors Club 2008

Unless someone can be found to manage Banwell's Carnival Committee there will be no Carnival in 2008. Lyn Ralph stepped into the breach last year and, with the support of a small team of helpers, made BANFEST a roaring success. Unfortunately due to other commitments Lyn is unable to offer the same level of support this year.

If you feel that you are in a position to manage this valued, fund-raising event then please contact Lyn on 822741 who will be only too pleased to handover her contacts and advice.

Neil Merrick

It has been a good year for us with a variety of entertainments at our meetings each Thursday from 2.30p.m - 4.00p.m. in the Village Hall.

In the summer we had coach outings to Minehead and Weymouth and on December 20th we enjoyed a delicious Christmas lunch, followed by musical entertainment of carols and traditional Christmas songs. On the 9th January we are going to the Pantomime at Weston Playhouse to see Jack and the Beanstalk, and our A.G.M will be on the 17th January 2008.

We are always pleased to welcome new members (anyone 60 years and over) and we are looking for someone who could help to run our Club.

Mrs. D. Green

## Village Websites

St Andrew's Church – [www.standrewsbanwell.org.uk](http://www.standrewsbanwell.org.uk)

Contact: Dinah Harrison, email: [pccsecretary@standrewsbanwell.org.uk](mailto:pccsecretary@standrewsbanwell.org.uk)

Banwell Village Website – [www.banwell.info](http://www.banwell.info)

Contact: Graham Found, email: [graham@banwell.info](mailto:graham@banwell.info) Tel:822619

Banwell Parish Council Website – [www.banwellparishcouncil.co.uk](http://www.banwellparishcouncil.co.uk)

Contact: Mrs Nicola Hooper – [clerk@banwellparishcouncil.co.uk](mailto:clerk@banwellparishcouncil.co.uk)

The Friends of Banwell Primary School Website – [www.banwell.info/friends](http://www.banwell.info/friends)

Westfield Residents Assoc - [www.westfield.banwell.info](http://www.westfield.banwell.info)

email; [westfield@banwell.info](mailto:westfield@banwell.info)

Banwell Bowling Club Website – [www.banwellbowlsclub.com](http://www.banwellbowlsclub.com)

Banwell Royal British Legion Website – [www.rbl.banwell.info](http://www.rbl.banwell.info)

Banwell Baby and Toddler Group – [www.geocities.com/banwellbabytoddlers](http://www.geocities.com/banwellbabytoddlers)

# The Whistling Duck Informer

Tel: 01934 823127

“Hi Folks”

My name is Tim Collins, along with my family, Joi, my wife & Luke our son we run the “Whistling Duck Public House” in Banwell.

We would like to take this opportunity of wishing all of you a healthy, happy & prosperous New Year & to thank everyone for their support over the past 2 years that we've been here and to that we would like to inform you of some changes to Menu's & facilities for 2008.

From January, we are introducing our Fantastic “Season Changing” Fine Dining A la Carte Menu in what is now called the “Seasons Restaurant at the Whistling Duck”

Running along side the Main Menu. We will be offering a selection of superb malted granary filled baguettes from £3.95 & a selection of home made Steak Burgers with Salad & Fries from £4.95.

Also we will be offering a selection of family favourites with kiddie's portions at Half Price, with an additional Dish of the Day at £4.95, “Changing Daily”

There will also be our famous Steak section all served with Home Made Chips, Tomato, Flat Mushrooms, Butter Fried Onions & Watercress Salad.

We have also included our new Pizza Menu for your deliberation & are now offering a “Free” Home Delivery Service within a 3 Mile Radius.

I thank you for your time & sincerely hope that we can be of service to you in 2008.

For more information, please call the above telephone number.

## The Whistling Duck Pizza Menu

Tel: 01934 823127

1. Margarita	= Cheese & Tomato	£8.95
2. Napolitano	= Cheese, Tomato, Garlic & Oregano	£9.45
3. Hawaiian	= Cheese, Tomato, Ham & Pineapple	£9.95
4. Bolognese	= Topped with Classical Meat Sauce & Cheese	£9.95
5. 4 Cheese	= Cheddar, Mozzarella, Gorgonzola & Parmesan	£9.95
6. Marinara	= Prawns, Tuna, Anchovy & Olives	£10.95
7. Roccolla	= Rocket & Parmesan Salad	£9.45
8. Putanesca	= Onion, Mushroom, Garlic, Chilli & Olives	£9.95

- All our Pizza's are Freshly Baked to Order.
- We offer a 50% Discount for Lunch Time Diners
- 20% Discount for “Takeaway Customers” (Self Pick-Up Only)
- Alternatively we offer a “Free Home Delivery Service” (Tues-Sat Evening only 6-10pm)

# The Turning Of The Year

A few years ago one of the Sunday magazines printed a Doom Directory. It surveyed the possible ways in which the world might come to an end - nuclear disaster, famine, global warming and so on. The cover showed a man bearing a placard, 'The end of the world is at hand': he was at a bus stop peering down to see the times of the last buses!

In October of last year the United Nations published an environmental audit, which concluded that the speed at which we are using the earth's resources has put humanity's very survival at risk. It is a bleak thought to consider as one year ends and another begins. Where can we place our hope and find any assurance? we ask ourselves. Do we need to think of the last buses on our earthly journey?

This month's painting was painted in Italy at a time when there was similar speculation about the end of the world. A mesmerising priest called Savonarola had preached in Florence about portents of this end time and the final battle that would take place. His own end was gruesome and horrific as the church authorities silenced his voice, but his influence lingered on among people. Nowhere more so than in Botticelli, who painted this 'Mystic Nativity' in 1500, two years after Savonarola's death.

At first glance, it looks a typical Epiphany scene, for the wise men are shown to the stable by an angel. But everything is basic and rudimentary. The wise men do not wear luxurious clothing, they have no servants, they bear no gifts. The stable is just a thatched roof propped against the mouth

of the cave, with Joseph oddly hunched at one side. The babe kicks a leg into the air as Mary and the animals watch on, looking from the inside of the cave. But then look above the scene. There is a long inscription



from Botticelli: it announces that he painted this Nativity at the end of 1500 to provide a key to the violent and confused times in which he lived. At the bottom little demons scramble back to the underworld, and those who have been through the battle of life are comforted by angels, and there are more angels engaged in an ecstatic dance above the stable with olive branches and scrolls in their hands.

At the heart of it all is the simple nativity scene.

Botticelli seems to be making a heartfelt statement about his faith in the light of all that he had experienced and seen around him: his distress at the suffering war had brought, and his sense of doom that war was

a portent of worse things to come. But the painting also shows his calm resignation that as one century turned into another, and one year into another, there is a birth which can be the pivot of that turning. A birth which is a sign of a future, a sign of new life, a sign of love. We can come through, he says, if we realise where our hope and trust should be placed - not in the pursuit of power which leads to death and destruction, but in a birth that leads ultimately to a heaven of victory and dancing and celebration.

The painting is not about winter, it is about spring: a season of hope and new life. We can draw the curtains across this nativity scene and shut out the light and springtime. But then, says Botticelli, chaos and war and greed will flourish. Go to the stable with the wise men, open the curtains, invite the Christ-Child in, and all will be transformed. Savonarola had preached the same message a few years earlier, 'If you wish to be at rest, seek Christ. Come to this crib, seek none but him, and you will find rest. Be well assured that you will never have peace until you come to this crib and to this light of faith in Christ.'

Rev Michael Burgess

Reprinted by kind permission of the National Gallery, London.

## Heard On An Answering Machine.

C'mon... you can do it... just a little one. That's the way... just a little beep, just a little one. C'mon... good boy... here we go... like this -- beeeeeeep, just a little one, beeeeeeeeeep, c'mon... There you go!

# Why Argue?

A Russian couple was walking down the street in St. Petersburg the other night, when the man felt a drop hit his nose. "I think it's raining," he said to his wife.

"No, that felt more like snow to me," she replied. "No, I'm sure it was just rain, he said." Well, as these things go, they were about to have a major argument about whether it was raining or snowing. Just then they saw a minor communist party official walking toward them. "Let's not fight about it," the man said, "let's ask Comrade Rudolph whether it's officially raining or snowing."

As the official approached, the man said, "Tell us, Comrade Rudolph, is it officially raining or snowing?"

"It's raining, of course," he answered and walked on. But the woman insisted: "I know that felt like snow!" To which the man quietly replied: "Rudolph the Red knows rain, dear!"



## ROBERT COMBER HANDYMAN

For all small jobs in the house and garden,  
Including - woodwork, plumbing,  
furniture repair and assembly.

Put up that shelf or paint that gate.

Need that extra hand?

Telephone 01934 513092

Mobile 07796 122485

E-mail : Comberhandyman@aol.com

To advertise in this magazine give our advertisement manager

**Mike Hebden**

a call on 823517 to discuss your requirements

# WHAT'S ON THIS MONTH

<b>MONDAY</b>				
14th	12.30 - 1.30pm	Soup Lunch	*	V.H.
14th	7.30 pm	Parish Council	*	V.H.
28th	7.30 pm	“ “	*	Meth. Hall
Weekly	10.00 am	Keep Fit	*	V.H.
Weekly	5.30 – 6.30 pm	Beavers	*	Scout Hall
Weekly	6.00 - 8.45 pm	Beginners & Advanced Yoga	*	V.H.

<b>TUESDAY</b>				
Weekly	10.00 am	Mendip Art Group (term time only)	*	V.H.
Weekly	1.00 - 3.30 pm	Playgroup	*	P. H.
Weekly	5.45 - 7.15 pm	Brownies	*	V.H.
Weekly	7.00 - 9.00 pm	Guides	*	Scout Hall

<b>WEDNESDAY</b>				
3rd&16th	1.30 - 3.30 pm	Baby Clinic	*	V.H.
9th	2.30 pm	Mothers' Union – Speaker: Liz Green “Report on M.U. General Meeting”	*	V.H.
9th	7.30pm	Royal British Legion	*	Scout Hall
Weekly	7.30 pm	Bell Ringing Practice	*	St. Andrews
Weekly	8.00 pm	Banwell Sequence Dance Club	*	V.H.
Weekly	1.30 pm	Bridge Club	*	V.H.

<b>THURSDAY</b>				
10th & 24th	10.00 am	Banwell Short Mat Bowling	*	V.H.
3rd 17th & 31st	7.30 pm	“ “ “ “	*	V.H.
10th	7.30 pm	W.I. Speaker: Mr T Merrett-Smith “Thanks for the Memory”	*	V.H.
Weekly	1.00 - 3.30pm	Playgroup	*	P.H.
Weekly	2.30 pm	Seniors' Club	*	V.H.
Weekly	7.30 – 10.00 pm	Youth Club (term time only)	*	Y.C.C.
Weekly	5.30 - 6.30 pm	Rainbows	*	Scout Hall

<b>FRIDAY</b>				
11th	7.30 pm	Archaeology Society – Speaker: Gordon Strong “ Stanton Drew”	*	V.H.
Weekly	9.30 - 11.45 am	Baby/Toddler Group	*	Scout Hall
Weekly	6.30 – 7.45 pm	Cubs	*	Scout Hall
Weekly	7.45 – 9.30 pm	Scouts	*	Scout Hall

<b>SUNDAY</b>				
Weekly	11.00 am	Judo Club	*	Y.C.C.

**Abbreviations:** \* Visitors Welcome; **V.H.** Village Hall; **M.H.** Methodist Hall; **P.H.** Playgroup Hall; **Y.C.C.** Youth and Community Centre.

# Be still and know that I am God

## The 5 Minute Meditation

These words from Psalm 46:10 direct us to take time and wait on God in quiet reflection. For this new series, 'The 5 Minute Meditation', a passage of Scripture or lines from a familiar hymn will guide us in our meditation.

This 'Five Minute Meditation' comes from just one line in the very first book of the Bible: 'This is the house of God ...this is the gate of heaven' (Genesis 28:17).

This old story reminds us that God often meets us in the most unexpected places. The words were spoken by Jacob and he was not one of the more attractive people we meet in the Bible! His very name means 'cheat' or 'supplanter.'

Jacob had deceived his old blind father, Isaac, and had stolen his brother Esau's family birthright. And then he ran away; away from home, away from his family, away from God - or so he thought. With only a stone for a pillow and the bleak desert around him, he lay down to sleep and had a dream.

In the dream to saw a ladder that reached to heaven, with angels going up and down the ladder. These were God's messengers of communication. The God of Scripture is a speaking God and he is always trying to get our attention. Often, like Jacob, we're too tired, or too busy, or too self-occupied, to hear the Lord's voice. Jacob woke from sleep, thought about the dream - and knew

what it meant. God is here! He's here with me in this empty desert! His angel messengers are around me! This is God's house! This is the gate of heaven!

And that's just the point. Wherever we are just now - THAT place can be for us the gate of heaven. When we're in church we expect to feel the presence of God. But our Lord is not restricted to church buildings. He comes to us where we ARE. Often, as with Jacob, he comes uninvited. There is no mention in the Genesis story that Jacob prayed, or wanted God or even thought about him. God comes seeking us before we seek him.

The English poet Francis Thompson wrote of how he tried to run away from God. 'I fled Him down the nights and down the days; I fled Him down the arches of the years.' But he could not escape from 'those strong Feet that followed, followed, after.' In this poem, The Hound of Heaven, Thompson is describing his conversion. The God he fled from finally found him and Thompson found himself in God's house.

It was the same with Jacob. His name was later changed from Jacob to 'Israel,' meaning a prince with God. Who knows what great things can happen to us when we find ourselves in the house of God ...at the gate of heaven!

Dr Herbert McGonigle

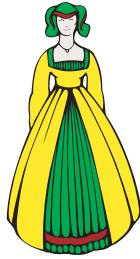
*Dr Herbert McGonigle is Senior Lecturer in Historical Theology, Church History and Wesley Studies in Nazarene Theological College, Manchester, England.*

He felt that his whole life was some kind of dream and he sometimes wondered whose it was and whether they were enjoying it.

**Douglas Adams**



# Winter Draws On! (Yet Again)



An Evening of Music Hall Entertainment

SATURDAY 9th FEBRUARY - 7.30pm BANWELL VILLAGE HALL

TICKETS £7.50 - (including Hot Supper)

from

Vine Counselling Services 876377, Sonia 820460, Mendip Office and Art, Congress-  
bury, and cast members -

*(please state any dietary needs on booking)*

**PROFITS TO VINE COUNSELLING SERVICES**



Kate Hebden  
ICSF MSF

Designer Florist

Tel - 01934 842870  
Mobile - 07960 479597  
E-mail - katedasie@yahoo.co.uk

- Bridal Flowers - Venue & Reception - Church Flowers -

## John Irving Funeral Directors

**01934 822880**  
Independent Family Business

Serving the community  
for more than three generations

- \* 24hr personal service
- \* Home visits in any area
- \* Private Chapels of Rest
- \* Pre-payment Plans



**Pennyard House**  
East Street  
Banwell  
BS29 6BW

LOGS FOR SALE, TREE FELLING

CROWN REDUCTION STUMP GRINDING, RE-SHAPING

A.R. THORNE (NPTC cert)  
TREE SERVICES  
Tel: 01934 420142 Mob: 07765 406689

FREE QUOTATIONS  
AND CONSULTATIONS

   
FULLY INSURED

## Banwell Denture Repairs



**Emergency and Out of Hours  
Service**  
Evenings and Weekends

No one understands more the inconvenience and embarrassment caused when you break or damage your dentures which is why whenever it happens you can count on us to save the day.



**Telephone: 01934 822158**

The Old Village Bakery, West Street, Banwell

## Need a legal expert on your side?

Choosing the right solicitor can be difficult. You need an expert on your side; someone who will assist you and guide you through the often complicated legal process. You need a solicitor who is local to you and who understands local issues. You also need a solicitor who will respond to your needs, return your telephone calls and keep you informed every step of the way.

Many businesses promise the world when it comes to "customer service" yet deliver very little.

When you choose John Hodge solicitors to help you, you are guaranteed to receive help from a firm who are part of your community and who pride themselves on looking after you. We are never complacent and always strive to improve the service we have offered since 1777.

For expert assistance please call John Hodge Solicitors on:

**0800 097 8611**

**John Hodge**  
SOLICITORS

Weston-s-Mare, Yatton, Clevedon, Wedmore & Bristol

# Keep Banwell Alive

## AQUABLAST (24hr DRAIN SERVICE)

Hillend Farm, Hillend 824355  
*Low Rates, High Pressure Jetting.  
 Toilets, Sinks, Drains and Gutters Unblocked.  
 Drain Replacing. Root Cutting &  
 Colour CCTV Surveys.*

## A. P. T. MOTORS

Summer Lane, Banwell 820663  
*Servicing, Repairs, M.O.T.  
 New & Used Car Sales,  
 Body Repairs, Insurance Work.  
 www.aptmotors.co.uk.*

## E.M.C. SCHOOL OF MOTORING

*Straight Forward Planned  
 Professional Tuition by D.O.T. ADI* 822250  
 Mike Curtis,  
 MIAM - WAPDI - D.O.T. ADI - MSA - DIA

## TOPAZ DESIGN & DECORATING

*Let me help you create the look you've always  
 wanted. Friendly advice with a professional  
 decorating service.  
 Free consultation. References available.  
 Call Angie Nicoll on 07887 768214 or* 823314

## INTERIOR AND EXTERIOR DECORATING

*Steve Price for all property maintenance.  
 Also fitted kitchens etc.  
 No job too small.  
 mobile 07766 223970 or* 820214

## BANWELL NEWS

*Ian, Jean & Paul at*  
 36 West Street 822226  
*Newsagents, Confectioners, Tobacconists  
 and Grocers. Video library & National Lottery.*

## FOR ALL WASHING MACHINE AND VACUUM CLEANER

*Repairs and Service*  
 Phone N.J. Kemp 823250

## CARAVAN SALES & CALOR GAS

Davan Caravans Ltd. 510606  
 St. Georges, Weston-super-Mare

## BANWELL GARDEN NURSERIES

Castle Hill Banwell 822246  
*Shrubs, Conifers, Fruit trees, Compost, Peat.  
 Wide range of garden sundries. Landscaping  
 service. Sheds, conservatories, stoneware,  
 slabs, Contact us first for all gardening needs.*

## DIGITAL T. V.

**AERIAL & SATELLITE SYSTEMS**  
*Sky-Freeview & Freesat sold,  
 installed and repaired.*  
 Stuart Jack, AMIPRE 820028  
 33 High Street, Banwell

## TREE SERVICE

Court Farm, Wrington, Somerset. 862229  
*Tree Surgery; Dangerous Trees; Tree Felling;  
 Conifer reduction; Hedge Trimming.  
 Free estimates. Fully insured (N. F. U.)  
 Hardwood Logs £70 a truckfull; double £130.*

## P J PLANT

*All types of groundwork undertaken  
 Footings. Drains. Garden Excavations  
 Land drainage systems  
 No job too big or too small  
 PHIL NEWTON mobile 07881 581157. 624743*

## ROOFCHECK - Roofing Contractors,

*All re-roofing repairs, replacement of fascias,  
 soffits and guttering in PVC carried out promptly  
 and expertly.  
 Member of the Guild of Builders and Contractors  
 Tel. Anytime 644430*

## GUITAR TUITION

*Classically trained guitarist teaches classical  
 through pop. No guitar needed .  
 Also guitars bought and sold. Available as solo  
 artist for parties, clubs and functions.*  
 Phone Terry 824552

## REGISTERED OSTEOPATH

844764  
 Peter Everett, DO MRO  
 No. 6 Corner House  
 Woodborough Road Winscombe  
*24-hour service. Home visits by arrangement.*

## J&M CARPETS

*Your local Carpet Specialist  
 Supply and Fit, Domestic and Contract  
 Free estimates, Planning and Home Selection  
 service. (mobile 07905 421863)* 820783

## BANWELL STORES

Angie & Mani 38 West Street 822405  
*Bake N' Bite, DVD & Video rental,  
 Groceries, Fruit & Veg, Alcohol  
 Opening Hours Sun - Thur 8am to 8pm  
 Fri & Sat 8am to 8.30pm*

# Support Local Traders

## CHIROPODIST

David Anderson MBChA, MSSCh 750329  
*Please phone for an appointment or Home visit.  
 Clinic held in Banwell Village Hall Wed. a.m.*

## BANWELL GARAGE MOTOR ENGINEERS

20 Knightcott Road, Banwell 823200  
*Servicing & repairs, all makes petrol/diesel.  
 MOT's arranged. Breakdown & recovery serv-  
 ice. Welding and auto electrical work.  
 Competitive rates. Call Darcy Smith now.*

## QUALIFIED ELECTRICIAN

City & Guilds - 16th Edition Regs  
 Electrical Installations.  
 Extra Sockets Security lights etc.  
 Free quotes. No obligation. No VAT  
 Steve Insley (Mobile 07971 413603) 812709

## BEAUTY THERAPY IN BANWELL

*Waxing, manicures, pedicures, facials, lash tint-  
 ing and aromatherapy massage.  
 Gift Vouchers available. City & Guilds  
 For appointments or enquiries ring Nicola on  
 822422 / Mobile 07944 737406*

## HORIZON COMPUTERS

109 High Street Worle 524664  
*Everything for the home and office  
 Software – Consumables – Accessories –  
 Stationery all unbeatable prices.  
 Custom Built Computers delivered & installed*

## HIGHFIELD KENNELS AND CATTERY

822372  
 High Street, Banwell  
*Mon – Sat 10am – 6pm. Sun 10am – 2pm  
 Heated accommodation. Family run Business  
 Delivery & Collection service. Fully Insured  
 www.kennelandcattery.co.uk*

## TIMBER WORK BUILDINGS

Timber Yard, Shute Shelve, Cross.  
 Manufacturers, Top Quality Sheds,  
 Sunhouses, Workshops, Garages,  
 Conservatories, Storm Porches.  
 Call and see, or phone 732396

## BOULTERS OF BANWELL LTD.

Knightcott Banwell 822137  
*'The Country Store that gives you more'  
 Garden Machinery. Tools and Workwear plus-  
 Outdoor Pursuits & Equestrian Equipment*

## STONEWORK & HARD LANDSCAPING

Derek & Sarah  
 Tel 07715 443800 or 820244

## CORONETTE COIFFURE & CLIPPERS

Ladies Hair Studio & Barbers  
 3 West Street, Banwell 823631  
*Hairdressing to suit all needs. Professional and  
 advanced City & Guilds qualified stylists.  
 Est. 1974. Late night Fridays.*

## 'CHILLIES'

26 Church Street  
*Indian and English takeaway foods  
 Finest currys in Banwell 822775 or 824920  
 FREE HOME DELIVERY (min order £10.00)*

## WINSCOMBE SOCIAL CLUB

842624  
 7 Sandford Rd, Winscombe (opp. free c/park)  
*New members welcome, £5 year membership.  
 Cheapest drinks in the area, live entertainment  
 1st & 3rd Sats, Bingo Sun eve. & Tues. eve.  
 Large hall & function rooms free to members.*

## THE ELMS B&B

Wolvershill Road, Banwell  
*offers guests a comfortable & luxurious stay.  
 Please telephone for enquiries 824925  
 or 07929 560 536  
 Visit www.theelmsbedandbreakfast.co.uk*

## FOR ALL OCCASIONS

**BUFFETS AND DINNER PARTIES**  
*Weddings, birthdays, funerals, coming of age  
 parties all catered for with delicious home-  
 cooked food from a wide variety of menus.  
 Ring Cheryl Laycock - eve & w/e 626483*

## LADY PAINTER / DECORATOR

*has joined DPS Property Maintenance  
 Interior / Exterior decorating  
 Plumbing / Electrical  
 Decking / Gardening. No job too small.  
 Mobile 07715 127951 824264*

## WEDDING AND EVENING GOWNS

*Something special? Wedding and Evening  
 Gowns made to order.  
 Yvonne Sargent, The Caves, Banwell. 820516*

## BANWELL PARISH CLERK

Mrs Nicola Hooper  
 41 Moor Lane  
 Hutton, BS24 9QL  
*(Phone calls Mon-Fri 9am - 5pm) 812567  
 Email: clerk@banwellparishcouncil.co.uk*

## GARDEN NEEDS & HOME NEEDS

4 North Road  
*For all your garden and home maintenance  
 tree felling, hedge cutting, whatever you need!!  
 Call Andy 824105*