

# Protect your pet for life now

**Vaccinate your pet for life for just £60**

That's right, for just sixty pounds you can protect your pet for life! With any vaccination course or annual booster, you can pay an additional £60 and get all normal annual vaccinations for your pet free for the rest of their life\*. So visit Weston-Super-Mare Vets4Pets to make an appointment and let your pet enjoy a safer tomorrow.

\*Subject to terms and conditions, see application form for details.

**Call 01934 631 777**

141 Milton Road, Weston-Super-Mare,  
North Somerset BS22 8AA

Open 8.30am-7pm Mon-Fri, 9am-12 noon Sat

**Vets4Pets**  
Putting your pet first.

[www.vets4pets.com](http://www.vets4pets.com)

## BANWELL PARISH NEWS

March 2007



Page

- |    |                   |
|----|-------------------|
| 3  | Rev Sam           |
| 9  | Valentine's dance |
| 10 | School Poems      |
| 11 | Debating Triumph  |
| 14 | Bowling Club      |
| 23 | Lord of Easter    |



# Banwell Denture Repairs

**Emergency and Out of Hours  
Service**



**Evenings and Weekends**

No one understands more the inconvenience and embarrassment caused when you break or damage your dentures which is why whenever it happens you can count on us to save the day.

**One hour  
service**

**Replica  
dentures  
made**

**Qualified  
Dental  
Technician**

**Telephone: 01934 822158**

The Old Village Bakery, West Street, Banwell

**Kate Hebden ICSF MSF  
Designer Florist**

**Mothers Day Sunday 18th March**

**FREE LOCAL DELIVERY**

Tel - 01934 842870  
Mobile - 07960 479597  
E-mail - katedasie@yahoo.co.uk

## Thought For The Month

“Fear of man will prove to be a snare, but whoever trusts in the Lord is kept safe.”  
Proverbs 29:25

When you listen to some of the things that people around you say, you may begin to worry unnecessarily. There are things that people say to ruin our peace and to stop us from prospering. But when you put your trust in the Lord rather than in man, God will lift you up to the place that he has made for you and he will help you succeed in all that you set out to do. He will keep you safe under the shadow of his wings and bless you.

Prayer:-

Heavenly father, I come before your presence. Father I know that you are faithful in all that you do. You have blessings for me that are beyond measure and I ask that you help me to keep my eyes focused upon you throughout my life. Only you know what is best for me. Help me not to worry about anything and keep me safe from all harm. With faith I commit everything into your loving hands. All this I ask in Jesus name. Amen.

Rev. Sam

### EAster Inspiration

For a unique EAster present this year  
why not paint your own egg cup ( £4.75)  
- we will supply a free chocolate egg to go with it.

Ceramic Painting at Icelton Pottery, Wick St Lawrence  
Phone Sam on 0 1934 525 939 or 0 7976 956 815

CHILDREN'S BIRTHDAY PARTIES – 'paint your own pottery' at  
the pottery or at your home – prices from £4 a head inclusive.

## Climate Change

The publication in January of the European Commission's report on climate change makes clear the seriousness of the situation and the drastic nature of measures needed to halt change, if not to reverse it. Where does that leave the community of faith? Are we to blame God for deserting us in our hour of prosperity? Are we, like Job's friends and neighbours, to say “curse God, and die”?

Or are we to recognise that, however unpalatable this may seem, it is our actions and our collective lifestyle that have brought about this situation? Fifty years ago the average British citizen travelled five miles a day; now he or she travels 29 miles, and nine of that is overseas air travel. Fifty years ago the average home contained two or three electric motors, a vacuum cleaner, a fridge and perhaps a washing machine; count how many there are your home today

Yet we should not be dismayed. The years of crisis are often the landmarks of faith: the exodus, the exile, the persecutions under Nero, the European holocaust of the Jews, all of these have led people of faith towards new understandings of the God who is redeemer as well as creator, who is with us no matter what. So will climate change and our response to it be given sufficient prayer and dedication?

Like Noah in Genesis 9 we have been given responsibility for the earth and for managing its fruitfulness; like Moses in Leviticus 25 we have the task of allowing years for the land to rest. But we have widely ignored these ecological covenants, and we are now paying the price for squandering God's gifts. Yet if this crisis enables us to focus on using his gifts simply but well, it will be worth the problems of change.

# Prayer



The Church families of St. Andrew's and Banwell Methodist Church will be praying for the people in your area on the following Sundays.

## March

4th Emery Gate  
11th Dark Lane  
18th East Street  
25th Greenfields Avenue

## April

1st Gables Close  
8th High Street  
15th Hilmer Rise

If you have any special prayers or concerns, whether for yourself, one of your family or for a neighbour (e.g. someone who is sick: getting married: seeking employment: going away to work or college: or in any kind of trouble or difficulty), please ring one of the following numbers either to have a chat, or leave a message, or make an appointment for one of us to visit you, or vice versa.

Dinah Harrison 822344  
The Revd. Sam 852314

# R.B.L.

Banwell R.B.L. have arranged a trip to visit Tyntesfield House in Wraxall on Monday 23rd April, leaving from the main road by the recreation ground at 9.15 a.m. and leaving Tyntesfield at 1.30 p.m. The cost will be £12.20 non National Trust members and £3.75 National Trust members, this includes payment to the coach driver. There are some seats still available so if anyone would like to join us please telephone Laura Batt on 01934 823466.

## Ouch!

The reason lightning doesn't strike twice in the same place is that the same place isn't there the second time

## From the Registers

Baptisms:

### February

4th William Alfred (Freddy) Jones  
18th Lauren Rebecca Baird

Banwell Playgroup for rising 3s-5yr. olds meets Monday to Friday during term-time 9.00am - 11.30am. For more information please contact the Playgroup on 823404 or Wendy Lloyd 820605.

Baby/Toddler Group meets every Friday morning 9.30am -11.45am. at the Scout Hut. Contact Gareth Thomas 823177

Banwell Fish Scheme: Chairman Mrs Dinah Harrison 822344. Lift Co-ordinator Mrs G Boddy 823621.

Village Hall Booking Secretary: Mr David Westlake 30 Knightcott Road, Banwell. Tel: 822433.

Youth & Community Centre Booking Secretary: Nicola Hooper (Parish Clerk) 812567, email clerk@banwell.org

Methodist School Room Hire Bookings Tel: 822873 or 822066

Banwell-Potigny Twinning Assoc. Contact Jeanne Evans 823878

Banwell Bridge Club Contact: Roger Boland Tel: 820615 or Meg Tillotson Tel: 823252

## Services In Our Churches

### ST. ANDREW'S

	8.00 am	Holy Communion
	10.00 am	Family Eucharist
	3.30 pm	Evensong
1st Sunday	3.30 pm	BCP Eucharist
	7.15 pm	Young at Heart
18th	10.00 am	Mothering Sunday Service

### METHODIST

10.30 am	Morning Service & Sunday School
6.30 pm	Evening Service

**ALL WELCOME**

### ROMAN CATHOLIC Cheddar

Sunday	9.00 am	Mass
--------	---------	------

## Easter Services In Holy Week

### April

2nd	7.00pm	Compline	St Andrew's
3rd	7.00pm	Compline	St Andrew's
5th	6.30pm	Maunday Thursday Agape	Methodist Chapel
	7.30pm	Service	Methodist Chapel
6th	2.30pm	Good Friday Last Hour of the Cross	St Andrew's
8th	10.00am	Easter Day Family Eucharist & Easter Egg Hunt	St Andrew's



## K & B

Carpentry & Landscape

**All aspects of Landscape & Carpentry Undertaken**

Decking, Flooring, Fencing, Slabbing, Conservatories,  
Driveways, Partitions, Built-in kitchens & Bedrooms

**Free Quotes - Please contact 0784 2573609 or 01934 520217**

# THE BREWERS ARMS

Church Street Banwell

**Now re-opened under new management**

**Run by a family – for families**

With a strict 'No Smoking' policy throughout the pub  
for  
everyone's enjoyment

Real ales available

**Free Soft Drinks for designated driver  
of parties of 3 or more people**

*Jackie and Mike assure you of a warm  
welcome and we look forward to  
seeing you soon*

## Brewers Arms Re-opens

Jackie & Mike Hall would like to officially announce the re-opening of the Brewers Arms.

We are a family of three, with me and Mike both formerly serving in the Armed Forces, Mike with the Military Police and me with the Naval Reserve. As we are a family with a four year old granddaughter we would like to invite you all to a smoke-free environment, where children can roam free within the bar, and dogs are more than welcome to come in as well.

Some of you may have noticed if you have passed our Pub that we are currently improving the state and look of the building both internally and externally – with new signage for outside and new paintwork inside and out. We will also be improving the beer gardens in due course with new tables and seating and providing a new play-area for the Children. For smokers, there will be, in accordance with the new guidelines due to be introduced on the 1st July, an area for smoking out on our smaller garden.

Meals are also planned from Mid-March. Currently we are installing a new kitchen and the sort of food we will be supplying will be the likes of Soup, Basket Meals, Ploughman's, to name but a few.

Entertainment is also on the agenda, with St Patrick's day already planned for, but we hope to also do theme nights such as Casino Night and Raffles – for instance Meat Raffle.

Due to the current re-decorating we are only open evenings and occasional afternoons, but hope to be open more regularly and

during the day in the near future.

So why not come down or pop in if you are passing and say hello to us as we would love to see old and new faces grace our establishment once more

Jackie and Mike

**Banwell Pre-School and Banwell Toddlers**

## Easter Family Disco

After the success of a similar event last year, the Pre-School and Toddlers will be holding another Disco on Saturday 31st March to help raise funds for both Playgroup and Toddlers. The Disco will start at 6pm and finish at 9pm.

As well as a Disco, there will also be a Children's Tuck Shop and the event is a B.Y.O.

Family Tickets are £10 (Incl. 2 Adults and up to 3 Children)

Adult Tickets are £3.50

Child Tickets are £2.00

Tickets will be available either from Banwell Pre-School, Banwell News or on the Door.

For further information please contact:

Debbie: 824716

**Please note our  
email address &  
website**

theeditor@banwellparishnews.org.uk  
www.banwellparishnews.org.uk



# Environmentally Friendly Transport

While driving in the countryside, a family caught up with an old farmer and his horse-drawn cart. The farmer obviously had a sense of humour, because attached to the back of the carriage was a hand printed sign... "Ecologically efficient vehicle: Runs on oats and grass. Caution: Do not step in exhaust."

Poverty is not natural – it is man-made and can be overcome by the actions of human beings.

**Nelson Mandela**

# Home Sweet Home

A woman was at home with her children when the telephone rang. In going to answer it, she tripped on a rug, grabbed for something to hold on to and seized the telephone table. It fell over with a crash, jarring the receiver off the hook.

As it fell, it hit the family dog, which leaped up, howling and barking. The woman's three-year-old son, startled by this noise, broke into loud screams. The woman mumbled some colourful words.

She finally managed to pick up the receiver and lift it to her ear, just in time to hear her husband's voice on the other end say, "Nobody's said hello yet, but it certainly sounds as if I have the right number."

## Village Websites

St Andrew's Church – [www.standrewsbanwell.org.uk](http://www.standrewsbanwell.org.uk)

Contact: Dinah Harrison, email: [pccsecretary@standrewsbanwell.org.uk](mailto:pccsecretary@standrewsbanwell.org.uk)

Banwell Village Website – [www.banwell.info](http://www.banwell.info)

Contact: Graham Found, email: [graham@banwell.info](mailto:graham@banwell.info) Tel: 822619

Banwell Parish Council Website – [www.banwell.org](http://www.banwell.org)

Contact Jony Russell, email: [wordsatwork@macunlimited.net](mailto:wordsatwork@macunlimited.net) Tel: 822715

The Friends of Banwell Primary School Website – [www.banwell.info/friends](http://www.banwell.info/friends)

Westfield Residents Assoc - [www.westfield.banwell.info](http://www.westfield.banwell.info)  
email: [westfield@banwell.info](mailto:westfield@banwell.info)

Banwell Bowling Club Website – [www.geocities.com/johnnyamos2002](http://www.geocities.com/johnnyamos2002)

Banwell Royal British Legion Website – [www.rbl.banwell.info](http://www.rbl.banwell.info)

Banwell Baby and Toddler Group – [www.geocities.com/banwellbabytoddlers](http://www.geocities.com/banwellbabytoddlers)

**British Heart Foundation**

# Valentine's Dance

Despite the bad weather and many people with the flu, there was a really good turnout at the Banwell Village Hall on Saturday 10th February for the Valentine's Dance in aid of The British Heart Foundation. Thanks to everyone who helped to set it out, the hall looked very festive, with balloons, red and white tablecloths, bowls of chocolates and hearts sprinkled on the tables.

The excellent entertainment for the evening was provided mainly by local band SILVERBACK, a three piece band comprising Terry on lead guitar and main vocals, Rick on bass guitar and vocals and Ray on drums, playing music from the 50's up to the present day. The guest artistes Patrick, Rebecca and Susan, each doing their own thing during the evening along with the "Skiffle" band, made it a varied and very enjoyable evening.

The raffle raised £160.00 thanks to the generosity of everyone who donated prizes (approx 40 in all).

The food couldn't be faulted and was excellently prepared and presented thanks to Karen and all her helpers. Due to T & P A Murray, Quality Butchers & Delicatessen, and Gardeners Patch of Bristol donating a good proportion of the food, the costs were kept down, which enabled us to add a bit more money to the pot.

System 2 Security Ltd very kindly sponsored us by paying for the hire of the hall, again a bit more for the pot.

Also a big thank you to all the staff at Druckers in the Sovereign Centre who donated their tip money.

Thanks must also go to Wendy, Shaun, Paul, Gloria and Robin who were instrumental in ensuring the evening went well, and to everyone who helped with the advertising.

A special thank you must go to Pauline who worked extremely hard both before the event and during the night. Without her help I would have been lost.

Last, but by no means least, a very big thank you must go to everyone who turned up on the night and gave so generously, making the evening such a big success.

Due to all the above we raised a total of £633.37 to donate to The British Heart Foundation.

Again, many thanks to everyone.

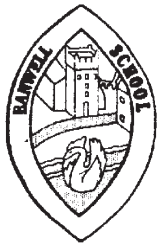
Kathy

# Drive & Earn

I decided to stop worrying about my teenage son's driving and take advantage of it. I got one of those bumper stickers that says, "How's my driving?" and put a premium number on it. At £1 a call, I've been making about £38 a week.

## CONTACTS

		Tel.
Church of England.	The PCC Secretary, The Coach House, East Street, Banwell	822320
Methodist.	Rev. Sam, Wesley Manse, Dinghurst Rd, Churchill	852314
Roman Catholic.	Rev. Fr. Tibor Szende, The Presbytery, Tweentown, Cheddar	742564



*On our way to school Y2 see some very strange things! We've been practising describing things, so made these descriptive poems. How many adjectives have we used in each poem?*

On my way to school I saw a cow.  
It was a white and black cow.  
It was a fat, white and black cow.  
It was a small, fat, white and black cow.  
It was an ugly, small, fat, white and black cow.  
It was a hungry, ugly, small, fat, white and black cow.  
It was an aggressive, hungry, ugly, small, fat, white and black cow.  
And it wanted to put his horns on me!

**by Alex**

On my way to school I saw a vampire.  
It was a man-eating vampire.  
It was an angry, man-eating vampire.  
It was a maniac, angry, man-eating vampire.  
It was a lazy, maniac, angry, man-eating vampire.  
It was a funny, lazy, maniac, angry, man-eating vampire.  
It was a smelly, funny, lazy, maniac, angry, man-eating vampire.  
And it wanted to eat me!

**by Eva**

## Cat Facts

Cats have more than one hundred vocal sounds, while dogs have only about ten.

Cats do not have a collarbone, which allows them to fit through any opening the size of their head.

Their field of vision doesn't extend directly

On my way to school I saw a giraffe.  
It was a brown giraffe.  
It was an ugly, brown giraffe.  
It was a long necked, ugly, brown giraffe.  
It was a smelly, long necked, ugly, brown giraffe.  
It was a naughty, smelly, long necked, ugly, brown giraffe.  
It was an intelligent, naughty, smelly, long necked, ugly, brown giraffe.  
And it wanted to bite me!

**by Bethany**

On my way to school I saw a mummy.  
It was a poisonous mummy.  
It was a scary, poisonous mummy.  
It was a tiny, scary, poisonous mummy.  
It was a lovely, tiny, scary, poisonous mummy.  
It was a chocolate, lovely, tiny, scary, poisonous mummy.  
It was a lazy, chocolate, lovely, tiny, scary, poisonous mummy.  
And I wanted to eat it!

**by Billy**

below their nose. That's why it's sometimes hard for cats to find titbits on the floor.

Meowing is reserved for humans. A cat will almost never meow at another cat.

A frightened cat can run at speeds of up to 31 mph, slightly faster than a human springer.

A group of cats is called a 'clowder'.

## Debating Triumph!

When Angus, Tom and I were told about



this debating competition we didn't have a clue what it was, for the school was told that it was just a workshop. At first we didn't really want to do it, but we went anyway just to try it. When we first went to Worle School it was really scary, because all of the children were really tall and therefore quite invading. We were lead round this mêlée of separate buildings until we reached this very large hut with a few others around it. We were informed that it was called the sixth form centre.

There was a man called Mr. Donald and he told us all about what we had to do.

When we got back to school we started to make our speeches with the help of Mrs Gardiner and Mrs Rac. We are very thankful to them for if they hadn't been there we would never have had the courage to do it in the first place. We decided to do the Banwell bypass because it effected us personally and we knew it was a current and ongoing argument. We had also decided that Angus was to be the main speaker, Tom the chairperson and me, Elin to give the vote of thanks.

We were really nervous as we entered the building for we had never been in the big hall

before because whenever we were supposed to look at it, it was always in use.

As we went in we went to catch up with each other because we had all come separately. What came first was the draw to see who was going first and so on. Tom picked a piece of the paper and it said we had to go second, the best place to come we all thought. We soon discovered that we were just as good as the others until the ghost one came on – we thought we were going to come second



against them. There were lots of pictures to be taken click, click, flash, flash all the time. The tension was strong.

Then the results.

The runners up were the ghost ones! We thought we had a chance.

And you'll never guess what.....  
**WE WON!**

It was the most amazing feeling ever – we could barely speak. We had our names put on a shield, twenty pounds for the school and ten pounds for each of us. Even more pictures snap, snap, snap.

Well that sums it up then – it was great!

Report written by Elin Byford and co team members Angus Macleod and Tom Bryant.



# Nuts

Huge UK boost for Fairtrade Nut famers

Two new own-brand Fairtrade nut products have just been launched in more than 600 Tesco stores nationwide – a chopped brazil and dried apricot mix and a peanut, cashew and dried mango mix. This brings the total Tesco 'Fairtrade nut family' to five products.

Twin Trading is the Fairtrade company behind Fairtrade brands Cafédirect, Divine Chocolate and AgroFair UK, while Tesco is the trailblazer for Fairtrade nuts in UK supermarkets.

Rosemary Kadzitch, 57, a peanut grower from Malawi, says: "Over the past year Fairtrade has already made a difference to our lives. It has brought a better, reliable and more stable market for our peanuts. The Fairtrade premium will help improve the lives of the entire community when it's used to pay for more boreholes to be drilled."

The unfortunate thing about this world is that good habits are so much easier to get out of than bad ones.

**Somerset Maugham**



## ROBERT COMBER HANDYMAN

For all small jobs in the house and garden,  
Including - woodwork, plumbing,  
furniture repair and assembly.  
Put up that shelf or paint that gate.  
Need that extra hand?

Telephone 01934 513092

Mobile 07796 122485

E-mail : comberhandyman@aol.com

## John Irving Funeral Directors

**01934 822880**

**Independent Family Business**

Serving the community  
for more than three generations

- \* 24hr personal service
- \* Home visits in any area
- \* Private Chapels of Rest
- \* Pre-payment Plans



**Pennyard House**  
**East Street**  
**Banwell**  
**BS29 6BW**



## Banwell Garage

20 Knightcott Rd, Banwell, BS29 6HA

We can help you with all aspects of maintaining and caring for your vehicle, including:

**Servicing MOT's Tyre Fitting & Exhausts**  
**Batteries Mechanical & Electrical Repairs**  
**Engine Management, ABS, Air Bag, Air Con faults**

We look after all makes & models of vehicles inc 4x4's and commercial's up to 3.5 ton.

We have the latest Bosch diagnostic equipment, Air conditioning set, and 4- wheel geometry equipment.

**Tel: 01934 823200**

[www.banwellgarage.com](http://www.banwellgarage.com) [banwellgarage@aol.com](mailto:banwellgarage@aol.com)

LOGS FOR SALE, TREE FELLING



**A.R. THORNE** (NPTC cert)  
**TREE SERVICES**  
Tel: 01934 420142 Mob: 07765 406689




FREE QUOTATIONS  
AND CONSULTATIONS



National Arborist Association

FULLY INSURED

STUMP GRINDING, RE-SHAPING


# Diabetes UK Weston Group

Invite you to an evening of song & music plus an element of fun & madness

## Footlight Frolics

### Saturday March 24th 7-30pm

### Banwell Village Hall



**Tickets Adult £5, Child £2-50p**  
**Chris Staff:- 01934 628985**  
**Dorian Prest 01934 514640 evening only**

# Banwell Bowling Club



## Open Day 29th April 2007

Never tried the game of bowls?

Thought you would like to give it a try, but were too shy, or just did not find the time to pop down to the bowls club and make a few enquiries?

Well, now here is your chance....

On Sunday 29th April 2007 the club will be holding an open day starting at 10am. So what do you have to do? Nothing strenuous, just turn up, and the club will provide you with shoes, bowls, and tuition, and before you know it you will be up and running, with the emphasis firmly on having fun. And afterwards enjoy a pint and a chat in the clubhouse.

So put the date in your diary and add it to your "Must Do" list and we will look forward to seeing you on the day.

Brief history of the Club:-

Banwell Bowling Club was formed in 1933 when it was decided to drain the village pond and turn it into a bowling green, and since that day the club has flourished to become one of the leading clubs in Somerset. It is

famous throughout the bowling world as the club with the 'L' shaped green.

The club is positioned in a well-sheltered and idyllic position within the village nestling under the church tower, and on a warm summer's day I can think of nothing better to do than sip a cool beer, play a game of bowls and enjoy the company of like-minded enthusiasts.

Age is no barrier - our youngest member is 11 years of age and the oldest around the 90 mark.

So give it some thought and, if needed, more information can be obtained from:-

Barry Taylor. President 01934 822942

John Amos. Hon Sec 01934 742995

Email: [banwellbowlsclub@hotmail.com](mailto:banwellbowlsclub@hotmail.com)

Web Site: [www.geocities.com/johnnyamos2002](http://www.geocities.com/johnnyamos2002)

## C V GOWER & SON

INDEPENDENT FAMILY FUNERAL DIRECTORS



- ✚ All localities covered
- ✚ 24hr. Service every day
- ✚ Distance and Overseas Funerals
- ✚ Pre-paid Funeral Plans
- ✚ Private Chapel of Rest
- ✚ Green Funerals arranged

**Winscombe (01934) 842945**

The Square,  
Winscombe,  
Somerset BS25 1BS

# News From The Gardening Club

At the meeting in February Robert Allwood spoke to us on Plants in Flowering Arrangements. With slides illustrating various arrangements we saw some quite unusual plant material being used, which gave us fresh ideas of what is possible. We also saw a range of shrubs which were useful to use. After the tea break Mr Allwood answered questions on gardening topics.

This month on Thursday 22nd March Christopher Smith will be showing us how to grow 'Plants for Free-Propagation'. We meet in the Village Hall, Westfield Road, at 7.30pm. Non-members are welcome. There will be a cup of tea / coffee available during the evening and also a raffle. We would appreciate donations for prizes. The competition is 'Three Daffodils'. Diary Date: Spring Show - Saturday 24th March. Further details may be obtained on 822433.

## Seniors

In spite of the fact we have lost our main Chairlady through ill-health, the Club is still going on. We have had a lively musical afternoon with a gentleman playing all the good old tunes, finishing with Auld-Lang-Syne when everyone joined in the linking of hands with great gusto. On another afternoon we had Bingo and a card game called Hoy that always causes amusing confusion.

Let's hope we don't get too much snow as not many of us Seniors are very keen on it, so here's hoping we will be able to soldier on. (G. Pinder)

# Sponsored Walk

My name is Tracey Taylor and I live in Silver Moor Lane, Banwell.

On September 21st 2007 I will be going to China to participate in a sponsored walk along the Great Wall in aid of Animals Asia China Bear Rescue (AAF).

AAF campaign tirelessly to rescue hundreds of Moon Bears imprisoned on bear farms throughout China.

So far 218 have been rescued.

These bears are kept in tiny rusty cages, barely bigger than their own bodies.

They are milked for their bile via a crude catheter implanted permanently into their gall bladders. They suffer a lifetime of agony before experiencing a slow, painful death.

AAF's goal is to eliminate bear farming by the 2008 Beijing Olympics.

I can be contacted on tel: 07966-526298 if you would like to speak to me to gain further information.

## Market

Banwell Village Hall Market is being held every 3rd Saturday of the month starting Saturday 17th March at the village hall in Westfield Road from 9.30 till 12.30. The stalls so far are: (and there is room for more) jewellery, household, plants, woollens, garden ornaments, craft books, silk clothes painting, aromatherapy oils, astrology charts and native American t-shirts, gifts, towels, jams, cakes, health magnets, herbalife and fruit and veg. Hope to see you there. Market is held just once a month so please come and support this event.



# Spring Show

The Banwell Gardening Club Spring Show is being held in the Village Hall on Saturday 24th March 2007.

There will be exhibits of Spring Flowers, Crafts and a Baking Section and, of course, the Children's Section, which means there should be something of interest for everyone.

Exhibits from all amateur gardeners in the village are welcome. You can download entry forms by clicking on the gardening club website [www.banwell.info](http://www.banwell.info). then go to community directory and scroll down to gardening club website. Entry forms can also be picked up from the library, Vickery's or telephone the Show Secretary, Jude Long on 820769.

Exhibits should be taken to the village hall between 8.30am and 10.00 am on the morning of the show. Judging starts at 10.15am.

Doors are opened to the public for viewing at 2.30pm and in the afternoon there will be tea, coffee and home made cakes and a raffle. So come along and join in the fun.

Trophies will be presented at approx. 4pm to the winning exhibitors.

We look forward to seeing you there. Bring your friends and family to support your village Spring Show.

Feeling gratitude and not expressing it is like wrapping a present and not giving it.

**William Arthur Ward**

# Gardening Tips For March



Feed daffodils, crocus and other spring flowering bulbs with growmore etc. Rejuvenate any ageing herbaceous plants; lift and divide into well rooted portions. Sow hardy annuals such as candytuft, godetia, larkspur, nigella, sweetpeas and Virginian stock. Prune stems of hydrangea varieties to two buds from the base and feed with fish blood and bone meal. Roll surface of lawns lightly to firm. Use rake to remove dead grass, leaves and rubbish. Mow lawns when weather permits. Start spraying fruit such as apples and pears if you have had problems with pests.

## WI

At our February meeting we were very pleased to welcome Mrs. Burroughs from Winscombe, who gave a very interesting talk on the Newlyn Painters. She brought along some pictures as samples of their work. Our 'leisure lady', Iris, gave us several suggestions for the coming year's outings. Unfortunately our skittle team lost their quarter final match against Kenn in the County Championship, but we congratulate them on their good run.

### Temper!

It's the only thing you can't get rid of by losing it.

**Anon**

To advertise in this magazine give our advertisement manager

**Mike Hebden**

a call on 823517 to discuss your requirements

# Mothers' Union

Our meeting was held on St Valentine's Day and as our speaker, Pearl Hunt, was taking as her subject 'Love Changes Everything' it was a very happy coincidence.

St Valentine was a pagan priest in ancient Rome who felt so sorry for the persecution of the early Christians [being thrown to the lions in the coliseum etc] that he tried to help them. He converted to Christianity and was thrown into prison for his pains. There he is reputed to have restored the sight of the gaoler's blind daughter. Perhaps fearing that his healing powers would be a further threat to the Emperor's authority he was martyred by being beaten to death.

There were several St Valentines, another being the bishop of Terni who was also martyred a few years later – it was not a safe time to be a Christian!

Our link with Valentine's Day is closely joined with the old Roman Lupercalia on the 15th February celebrating the Greek god Pan, symbol of Nature and fecundity. I think we all know about cupid, the mischievous little Roman boy god and his golden arrows, who was based on the Greek god Eros. The statue of the winged archer in Piccadilly, London, as a memorial to Lord Shaftesbury, was actually intended to represent the angel of Christian Charity, although it is commonly thought of as Eros!

Pearl Hunt spoke very movingly, with illustrations of significant music linked to crucial events in her life journey to being a Christian

preacher. She told us of her resistance to Christian life through happy and tragic times until a particularly life-changing event after the long-endured grief over the accidental death of her son. At a charismatic meeting she suddenly felt entirely enveloped by the love of God and her whole life changed completely. We were all touched by her experiences and the musical interludes.

Forthcoming Events.

Wednesday March 14th. Annual General Meeting 2.30pm Village Hall.

Monday March 26th. Deanery Lady Day Service. St Andrew's Banwell 2.30pm Conducted by the Rural Dean the Revd. Michael Slade. Preacher the Revd D Evans.

Branch Meeting Wednesday 11th April: Barry and Jean Mather: Banwell Illustrated. Visitors are very welcome.

## Mothers' Union Lent Lunches

In the Village Hall  
Starting on  
**Thursday 1st March**  
and then on subsequent  
Thursdays in March

12.30pm to 1.30pm

**All Welcome**

Copy for the next issue by the 23rd March

EDITOR: Dave Colbourne, The Gate House, East Street, Banwell. Tel.822902

ADVERTISEMENT MANAGER: Mike Hebden, 1 Chestnut Close. Banwell. Tel.823517  
[theeditor@banwellparishnews.org.uk](mailto:theeditor@banwellparishnews.org.uk)

## WHAT'S ON THIS MONTH

### MONDAY

12th	7.30 pm	Parish Council	*	V.H.
26th	7.30 pm	“ “	*	Meth. Hall
26th	2.30 pm	Lady Day Service	*	St. Andrews
Weekly	10.00 am	Keep Fit	*	V.H.
Weekly	6.45 - 8.15 pm	Cub Scouts	*	Scout Hall
Weekly	6.00 - 8.45 pm	Beginners & Advanced Yoga	*	V.H.

### TUESDAY

27th	7.30 pm	Banwell Flower Arranging Group - Practice Evening “Snowdrops in a Grid”		
Weekly	4.30 – 5.30 pm	Beavers	*	Scout Hall
Weekly	10.00 am	Mendip Art Group (term time only)	*	V.H.
Weekly	1.00 - 3.30 pm	Playgroup	*	P. H.
Weekly	5.45 - 7.15 pm	Brownies	*	V.H.
Weekly	7.00 - 9.00 pm	Guides	*	Scout Hall

### WEDNESDAY

7th & 21st	1.30 - 3.30 pm	Baby Clinic	*	V.H.
14th	2.30 pm	Mothers' Union - A.G.M.	*	V.H.
14th	7.15 pm	Royal British Legion	*	Scout Hall
Weekly	7.30 pm	Bell Ringing Practice	*	St. Andrews
Weekly	8.00 pm	Banwell Sequence Dance Club	*	V.H.
Weekly	1.30 pm	Bridge Club	*	V.H.

### THURSDAY

8th & 22nd	10.00 am	Banwell Short Mat Bowling	*	V.H.
1st 15th & 29th	7.30 pm	“ “ “ “	*	V.H.
8th	7.30 pm	W.I. Speaker: Mr M Horseman “A bit of this and that”	*	V.H.
22nd	7.30 pm	Gardening Club - Speaker: Christopher Smith “Plants for Free - Propagation”	*	V.H.
Weekly	1.00 - 3.30pm	Playgroup	*	P.H.
Weekly	2.30 pm	Seniors' Club	*	V.H.
Weekly	7.30 – 10.00 pm	Youth Club (term time only)	*	Y.C.C.
Weekly	5.30 - 6.30 pm	Rainbows	*	Scout Hall

### FRIDAY

2nd	2.00 pm	Women's World Day of Prayer Service	*	Meth. Hall
9th	7.30 pm	Archaeology Society - Speaker : Sarah Harris “Windmills & Millers of Somerset”	*	V.H.
Weekly	9.30 - 11.45 am	Baby/Toddler Group	*	Scout Hall
Weekly	7.30 – 9.30 pm	Scouts	*	Scout Hall

### SUNDAY

Weekly	11.00 am	Judo Club	*	Y.C.C.
--------	----------	-----------	---	--------

**Abbreviations:** \* Visitors Welcome; **V.H.** Village Hall; **M.H.** Methodist Hall; **P.H.** Playgroup Hall; **Y.C.C.** Youth and Community Centre.

## Archaeology

Those who braved the weather to attend the February meeting were disappointed to hear the Speaker was unable to come; however, their disappointment was short lived. First the President - Stan Rendell – spoke of the ‘Tsunami’ about 400 years ago that flooded large areas of Somerset, including the moors around Banwell, which then had only natural river drainage unlike the man-made watercourses we have to-day. The Chairman - Derek Crocker – then recounted the ‘digs’ that Banwell Society had undertaken in the past on Winthill. Finds from the original Roman Villa and the later Christian Monastery included many skeletons from Christian burials and the now famous Blue Glass Bowl. This bowl is held in the Museum at Oxford but it was suggested a request be made for it to be displayed in the Somerset Museum.

Members old and new thoroughly enjoyed the evening and most learned additional information about the area. We look forward to their future talks!

The next meeting will be on 9th March when Sarah Harris will be talking about the Windmills & Millers of Somerset. Visitors are always welcome.

## Banwell Fair Day

Banwell fair at the Fire Station raised £121 from the Cake & Jam stall for the St Margaret's Somerset Hospice.

Long ago when men cursed and beat the ground with sticks, it was called “witchcraft”; to-day, it is called “golf.

**Anon**

## Local Traders

### ALG ELECTRICS

*All work is certified to current legislation and comes with a three year warranty.*

*NAPIT - Full scope member. PART P registered TRUSTMARK registered member*  
(Mobile 07932 186590) 822759

### FREE WELLNESS EVALUATION

*Optimise your nutrition for weight control, increased energy and better health.*

*For more information or to book your complimentary Wellness Evaluation, call Guy*  
**www.herbal-health.org.uk** 824417

### WHITE LODGE CRAFTS

*Hand Crafted Cards & Knitted items*  
*Marmalades, Jams, Chutneys*  
(Commissions taken)

Contact Rosalind Denton 822430  
**CURTAINS**  
Curtains made, relined, altered 822726

### MINI-DIGGER HIRE (1.5TONNES)

*Self drive of operator*

*Daily, Weekly or Weekend rates*

*Free delivery Banwell area*

*Further information or advice*

D Ruby mobile 07749 285471 823142

### WEBSITE DESIGN AND BUILDING

*Small to medium websites designed, built, updated and re-worked. No minimum size, all websites will be unique to you and built to your specifications. Call for some no obligation information!* 824417

### WOODCHARM FITTED BEDROOMS

*Made to measure and expertly fitted.*

*Wardrobes, chests of drawers and cupboards.*

*Quality at competitive prices.*

Showroom 17 Lynx Crescent off Winterstoke Road. 414598



# Shop Locally

## WESTCOAST INTERIORS KITCHENS AND BEDROOMS

Showroom: Unit 2, Wolverhill Industrial Units  
off Wolverhill Road, Banwell 820025  
*Sliding mirror wardrobes made to measure.*

## DELICIOUS

West Street, Banwell  
*Fish and Chips & Chinese Take Away meals*  
*Extensive menu*  
*For people who enjoy good food* 823050

## BANWELL POST OFFICE

24 West Street, Banwell. BS29 6DB 822244  
*Support your local 'Community Award Winning'*  
*Post Office, the only village banking facility.*  
*The 'One Stop Post Shop' for all your greetings*  
*cards, postal and stationery requirements.*

## A. J. AUTOS

Unit 1, Wolverhill Industrial Units 824434  
Banwell  
*Vehicle repairs & maintenance,*  
*insurance work & M.O.T's Arranged*

## PLASTERING AND BUILDING MAINTENANCE

Steven Sherwood BA(Hons)  
Telephone: 820695/07958 021303  
*for quotes and advice on all building restoration.*

## N E PLUMBING AND HEATING

*For your local Corgi registered plumber*  
*and heating engineer:-*  
Ring Nick on 07707 069 726 or 822932

## WILL WRITING SERVICE

*Wills professionally prepared in the privacy of*  
*your home.*  
*Fixed fees include advice and Instruction*  
*taking: £69 single £89 husband and wife.*  
Tel.: David READ Services on 513489

## KNIGHTCOTT MOTORS

Knightcott 822335  
*For new and quality used cars*  
*and light commercials.*

## STEPHEN BENNETT & SON, BICSc

The Knoll, Wint hill, Banwell, BS29 6NG. *Com-*  
*mmercial contract cleaners. Specialist carpet and*  
*upholstery cleaners.*  
*Certified pest controllers.*  
(Mobile 07889 981019) Tel & Fax 822347

## NORTH SOMERSET COUNCILLORS

Hugh Parsons  
Banwell Castle 822263  
Tony Lake 852400  
Ann Harley 842069

**BANWELL VILLAGE PHARMACY** 820944  
Next Banwell Surgery, Westfield Rd.Fax 823869  
*Mon, Tues, Wed, Fri 9-1pm & 2-6pm, Thurs 9-*  
*2pm, Sat 9-12. Comprehensive medicines and*  
*NHSvprescription service. Open to all including*  
*patients at other surgeries.*

## A. E. & S. M. VICKERY

26 West Street 822412  
*Family Butchers*  
*We can supply your weekly meat or*  
*fill your freezer.*

## BANWELL ACTIVITY TOYS CENTRE

Shirley Davies, Eastermead Farm 823926  
*Top quality range of TP garden swings, slides,*  
*climbing frames, toboggans, trampolines,*  
*tractors and trailers, farms and forts, wooden*  
*dolls houses and furniture. Lots in stock*

## WORLE GLASS WINDOWS & JOINERY

Unit 7, Worle Industrial Estate,  
Queensway, Worle. 515470  
*For all your new work and replacements.*

## MOBILE HAIR CARE AND DESIGN

by Khanitha Masters B.A.(drama)  
*Fully qualified to create and care for YOUR*  
*beautiful hair style to suit your individual fea-*  
*tures. Competitive rates. Wedding and special*  
*event styling with a "different look".* 822367

## PAINTER & DECORATOR

*High quality guaranteed*  
*30 years experience*  
*fully insured - free estimates*  
Mike Worrall. 07747 102287 823696

## VIKING BARS

*Indoor/Outdoor licensed bars all events cov-*  
*ered. Birthdays, weddings, disco's etc.*  
*Fully licenced, professional service.*  
All areas Tel Mark 07761 332743

## FURNITURE REPAIR AND RESTORATION.

*Furniture Repairs;*  
*Antique Restoration; Cabinet Making.*  
Free estimates. 820426

# Keep Banwell Alive

## AQUABLAST (24hr DRAIN SERVICE)

Hillend Farm, Hillend 824355  
*Low Rates, High Pressure Jetting.*  
*Toilets, Sinks, Drains and Gutters Unblocked.*  
*Drain Replacing. Root Cutting &*  
*Colour CCTV Surveys.*

## A. P. T. MOTORS

820663  
Summer Lane, Banwell  
*Servicing, Repairs, M.O.T.*  
*New & Used Car Sales,*  
*Body Repairs, Insurance Work.*  
www.aptmotors.co.uk.

## E.M.C. SCHOOL OF MOTORING

*Straight Forward Planned*  
*Professional Tuition by D.O.T. ADI* 822250  
Mike Curtis,  
MIAM - WAPDI - D.O.T. ADI - MSA - DIA

## TOPAZ DESIGN & DECORATING

*Let me help you create the look you've always*  
*wanted. Friendly advice with a professional*  
*decorating service.*  
*Free consultation. References available.*  
Call Angie Nicoll on 07887 768214 or 823314

## INTERIOR AND EXTERIOR DECORATING

*Steve Price for all property maintenance.*  
*Also fitted kitchens etc.*  
*No job to small.*  
mobile 07766 223970 or 515850

## BANWELL NEWS

*Ian, Jean & Paul at*  
36 West Street 822226  
*Newsagents, Confectioners, Tobacconists*  
*and Grocers. Video library & National Lottery.*

## FOR ALL WASHING MACHINE AND VACUUM CLEANER

*Repairs and Service*  
Phone N.J. Kemp 823250

## CARAVAN SALES & CALOR GAS

Davan Caravans Ltd. 510606  
St. Georges, Weston-super-Mare

## BANWELL GARDEN NURSERIES

Castle Hill Banwell 822246  
*Shrubs, Conifers, Fruit trees, Compost, Peat.*  
*Wide range of garden sundries. Landscaping*  
*service. Sheds, conservatories, stoneware,*  
*slabs, Contact us first for all gardening needs.*

## DIGITAL T. V.

**AERIAL & SATELLITE SYSTEMS**  
*Sky-Freeview & Freesat sold,*  
*installed and repaired.*  
Stuart Jack, AMIPRE 820028  
33 High Street, Banwell

## TREE SERVICE

Court Farm, Wrington, Somerset. 862229  
*Tree Surgery; Dangerous Trees; Tree Felling;*  
*Conifer reduction; Hedge Trimming.*  
*Free estimates. Fully insured (N. F. U.)*  
*Hardwood Logs £70 a truckfull; double £130.*

## P J PLANT

*All types of groundwork undertaken*  
*Footings. Drains. Garden Excavations*  
*Land drainage systems*  
*No job too big or too small*  
PHIL NEWTON mobile 07881 581157. 624743

**ROOFCHECK - Roofing Contractors,**  
*All re-roofing repairs, replacement of fascias,*  
*soffits and guttering in PVC carried out promptly*  
*and expertly.*  
Member of the Guild of Builders and Contractors  
Tel. Anytime 644430

## GUITAR TUITION

*Classically trained guitarist teaches classical*  
*through pop. No guitar needed .*  
*Also guitars bought and sold. Available as solo*  
*artist for parties, clubs and functions.*  
Phone Terry 824552

## REGISTERED OSTEOPATH

844764  
Peter Everett, DO MRO  
No. 6 Corner House  
Woodborough Road Winscombe  
*24-hour service. Home visits by arrangement.*

## J&M CARPETS

*Your local Carpet Specialist*  
*Supply and Fit, Domestic and Contract*  
*Free estimates, Planning and Home Selection*  
*service. (mobile 07905 421863)* 820783

## BANWELL STORES

Angie & Mani 38 West Street 822405  
*Bake N' Bite, DVD & Video rental,*  
*Groceries, Fruit & Veg, Alcohol*  
*Opening Hours Sun - Thur 8am to 8pm*  
*Fri & Sat 8am to 8.30pm*

Typeset by Dave Colbourne The Gate House East Street Banwell Telephone 822902

Printed by **S P Press** Cheddar Telephone 744568 Fax 744320

## Support Local Traders

### CHIROPODIST

David Anderson MBChA, MSSCh 750329  
Please 'phone for an appointment or Home visit.  
Clinic held in Banwell Village Hall Wed. a.m.

### BANWELL GARAGE MOTOR ENGINEERS

20 Knightcott Road, Banwell 823200  
Servicing & repairs, all makes petrol/diesel.  
MOT's arranged. Breakdown & recovery service.  
Welding and auto electrical work.  
Competitive rates. Call Darcy Smith now.

### LEARNER DRIVING CENTRES

Unique fast track learning system, patient & friendly female instructor, Pass Plus registered.  
Kinlay French DSA ADI 824246

### QUALIFIED ELECTRICIAN

City & Guilds - 16th Edition Regs  
Electrical Instalations.  
Extra Sockets Securitylights etc.  
Free quotes. No obligation. No VAT  
Steve Insley (Mobile 07971 413603) 812709

### BEAUTY THERAPY IN BANWELL

Waxing, manicures, pedicures, facials, lash tinting and aromatherapy massage.  
Gift Vouchers available. City & Guilds  
For appointments or enquiries ring Nicola on 822422 / Mobile 07944 737406

### HORIZON COMPUTERS

109 High Street Worle 524664  
Everything for the home and office  
Software – Consumables – Accessories – Stationery all unbeatable prices.  
Custom Built Computers delivered & installed

### HIGHFIELD KENNELS AND CATTERY 822372

High Street, Banwell  
Mon – Sat 10am – 6pm. Sun 10am – 2pm  
Heated accommodation. Family run Business  
Delivery & Collection service. Fully Insured  
www.kennelandcattery.co.uk

### TIMBER WORK BUILDINGS

Timber Yard, Shute Shelve, Cross.  
Manufacturers, Top Quality Sheds, Sunhouses, Workshops, Garages, Conservatories, Storm Porches.  
Call and see, or phone 732396

### BOULTERS OF BANWELL LTD.

Knightcott Banwell 822137  
'The Country Store that gives you more'  
Garden Machinery. Tools and Workwear plus-  
Outdoor Pursuits & Equestrian Equipment

### CORONETTE COIFFURE & CLIPPERS

Ladies Hair Studio & Barbers  
3 West Street, Banwell 823631  
Hairdressing to suit all needs. Professional and advanced City & Guilds qualified stylists.  
Est. 1974. Late night Fridays.

### 'CHILLIES'

26 Church Street  
Indian and English takeaway foods  
Finest currys in Banwell 822775 or 824920  
FREE HOME DELIVERY (min order £10.00)

### WINSCOMBE SOCIAL CLUB 842624

7 Sandford Rd, Winscombe (opp. free c/park)  
New members welcome, £5 year membership.  
Cheapest drinks in the area, live entertainment  
1st & 3rd Sats, Bingo Sun eve. & Tues. eve.  
Large hall & function rooms free to members.

### THE ELMS B&B

Wolverhill Road, Banwell  
offers guests a comfortable & luxurious stay.  
Please telephone for enquiries 824925  
or 07929 560 536  
Visit [www.theelmsbedandbreakfast.co.uk](http://www.theelmsbedandbreakfast.co.uk)

### FOR ALL OCCASIONS

#### BUFFETS AND DINNER PARTIES

Weddings, birthdays, funerals, coming of age parties all catered for with delicious home-cooked food from a wide variety of menus.  
Ring Cheryl Laycock - eve & w/e 626483

### LADY PAINTER / DECORATOR

has joined DPS Property Maintenance  
Interior / Exterior decorating  
Plumbing / Electrical  
Decking / Gardening. No job too small.  
Mobile 07715 127951 824264

### WEDDING AND EVENING GOWNS

Something special? Wedding and Evening Gowns made to order.  
Yvonne Sargent, The Caves, Banwell. 820516

### BANWELL PARISH CLERK

Mrs Nicola Hooper  
41 Moor Lane  
Hutton, BS24 9QL  
(Phone calls Mon-Fri 9am - 5pm) 812567  
Email: [clerk@banwell.org](mailto:clerk@banwell.org)

### GARDEN NEEDS & HOME NEEDS

4 North Road  
For all your garden and home maintenance  
tree felling, hedgecutting, whatever you need!!  
Call Andy 824105

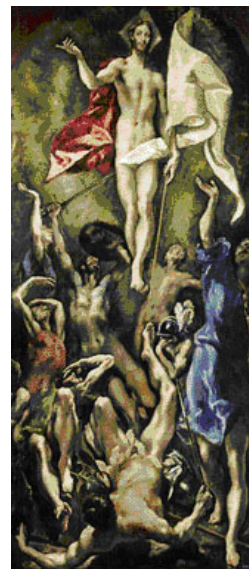
## Lord of Easter

At this time of the year we are rejoicing in Jesus the Lord of Easter, and this first painting captures the triumph and exultation of that victory. El Greco, the artist, was born on the island of Crete in 1541, educated in Venice and began his painting career in Rome. He moved to Spain in 1576, settling in Toledo. This 'Resurrection' was painted for an altarpiece in Madrid and is a late work from 1600 when his paintings seem inhabited by flame and wind.

If you look at it for a few moments, this work seems to be all arms and limbs with the figure of Christ rising like a flame or as if he had been shot from a gun to float above the disciples and guards below. The soldiers flounder unable to grasp the risen Lord, while the disciples reach upwards to

acclaim him.

In all this movement, El Greco captures the ecstasy of the event when the frontiers of this world and heaven were bridged by the triumphant Christ, who wears the red robe of human suffering, but also carries the brilliant white banner of victory. We can almost hear the Alleluias reverberating around as our eyes look up to behold our Lord of Easter.



Fr Michael Burgess

## Need a legal expert on your side?

Choosing the right solicitor can be difficult. You need an expert on your side; someone who will assist you and guide you through the often complicated legal process. You need a solicitor who is local to you and who understands local issues. You also need a solicitor who will respond to your needs, return your telephone calls and keep you informed every step of the way.

Many businesses promise the world when it comes to "customer service" yet deliver very little.

When you choose John Hodge solicitors to help you, you are guaranteed to receive help from a firm who are part of your community and who pride themselves on looking after you. We are never complacent and always strive to improve the service we have offered since 1777.

For expert assistance please call John Hodge Solicitors on:

**0800 097 8611**

Weston-s-Mare, Yatton, Clevedon, Wedmore & Bristol

**John Hodge**  
SOLICITORS